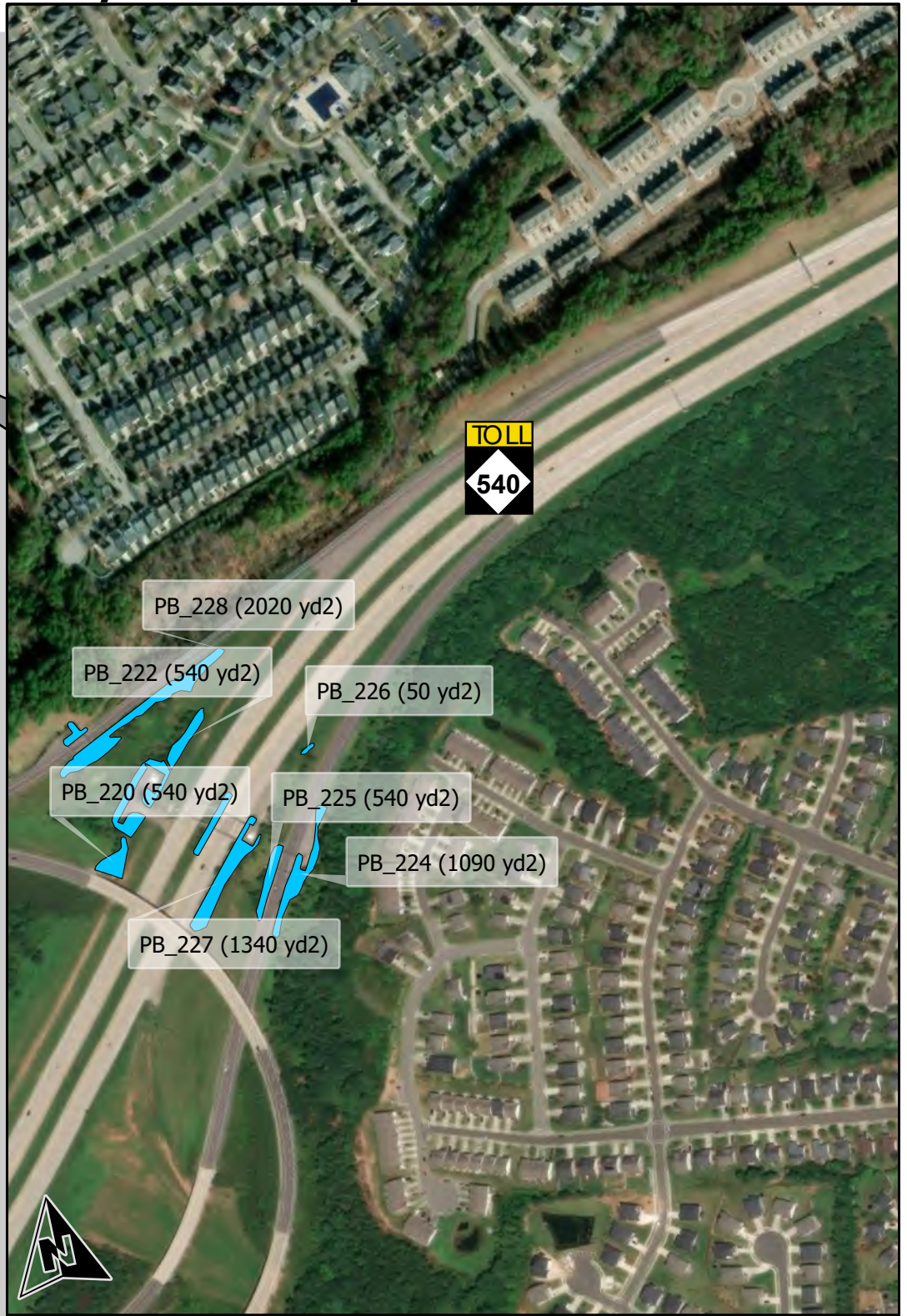
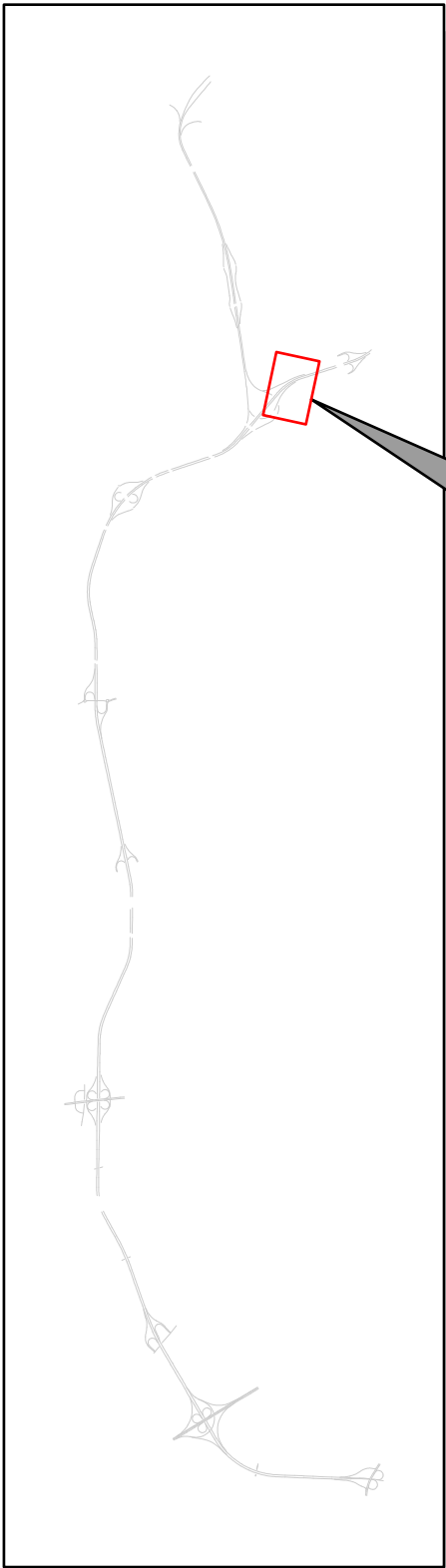


# Triangle Expressway Landscaped Areas: Plant Beds

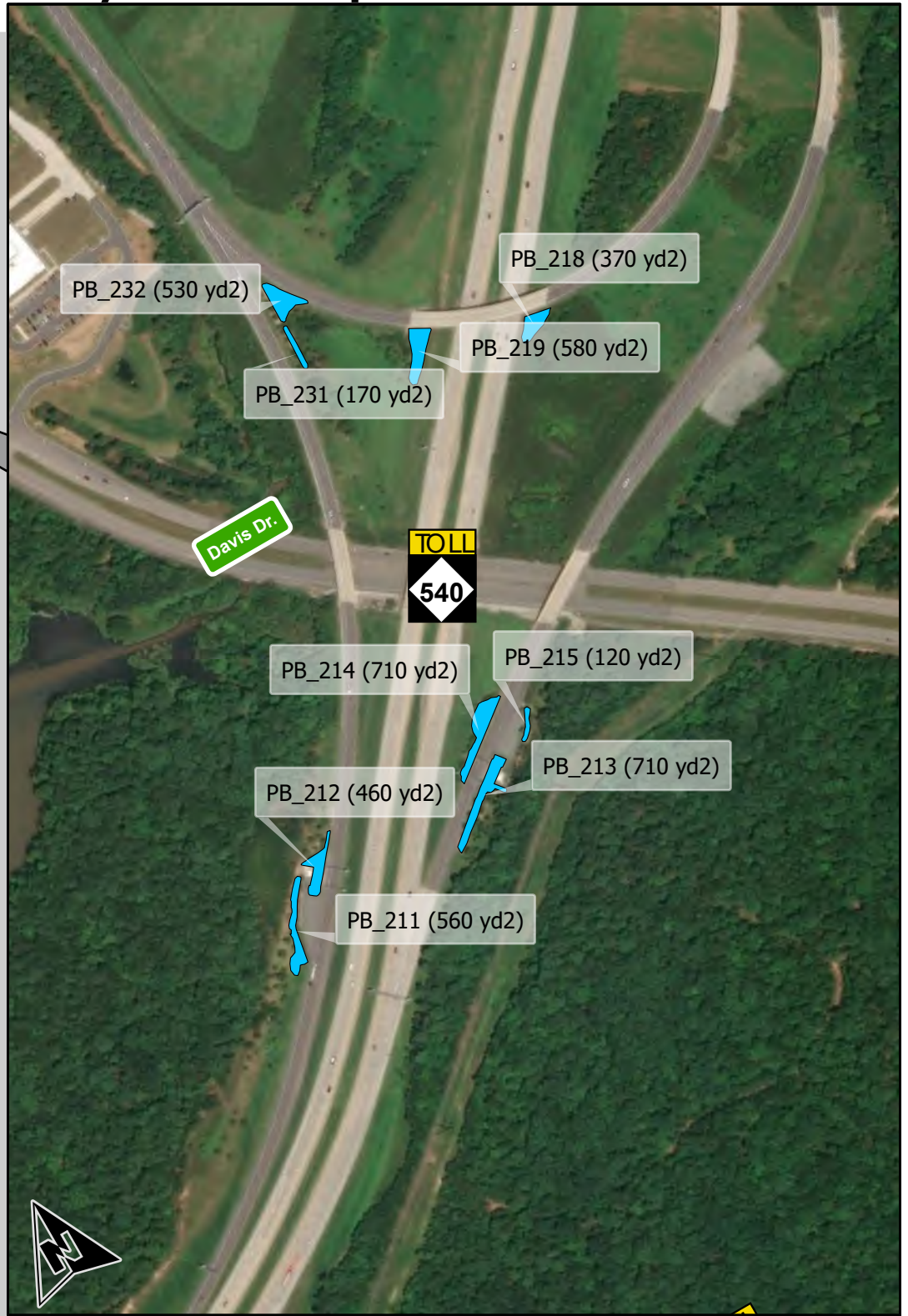
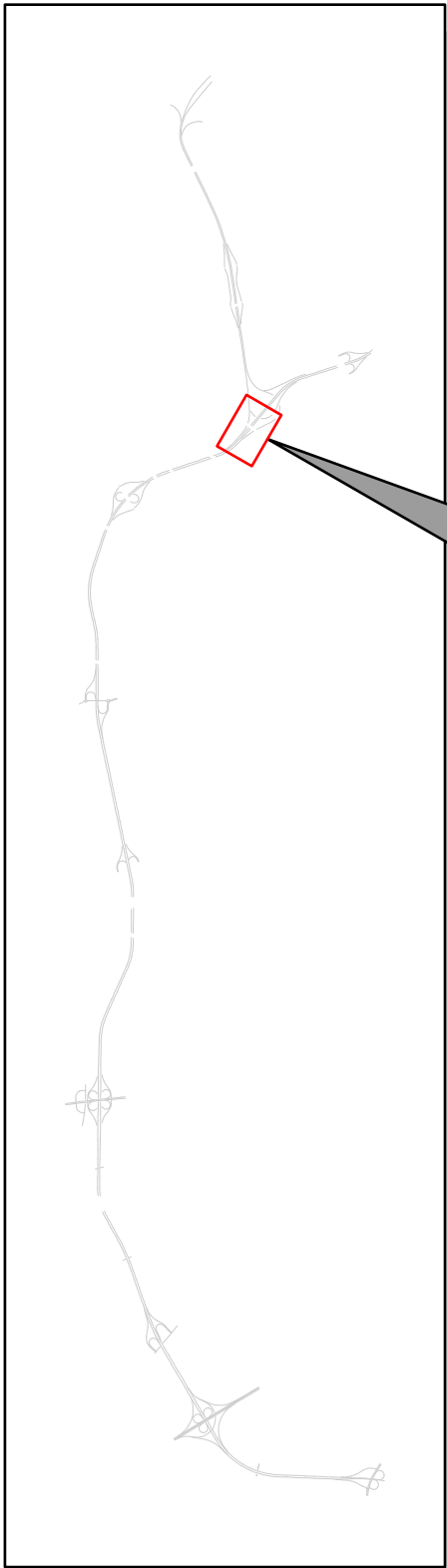


INV_ID	Area_SQYRD
PB_220	540
PB_221	1155
PB_222	535
PB_223	393
PB_224	1088

INV_ID	Area_SQYRD
PB_225	535
PB_226	52
PB_227	1339
PB_228	2023
PB_307	209



# Triangle Expressway Landscaped Areas: Plant Beds

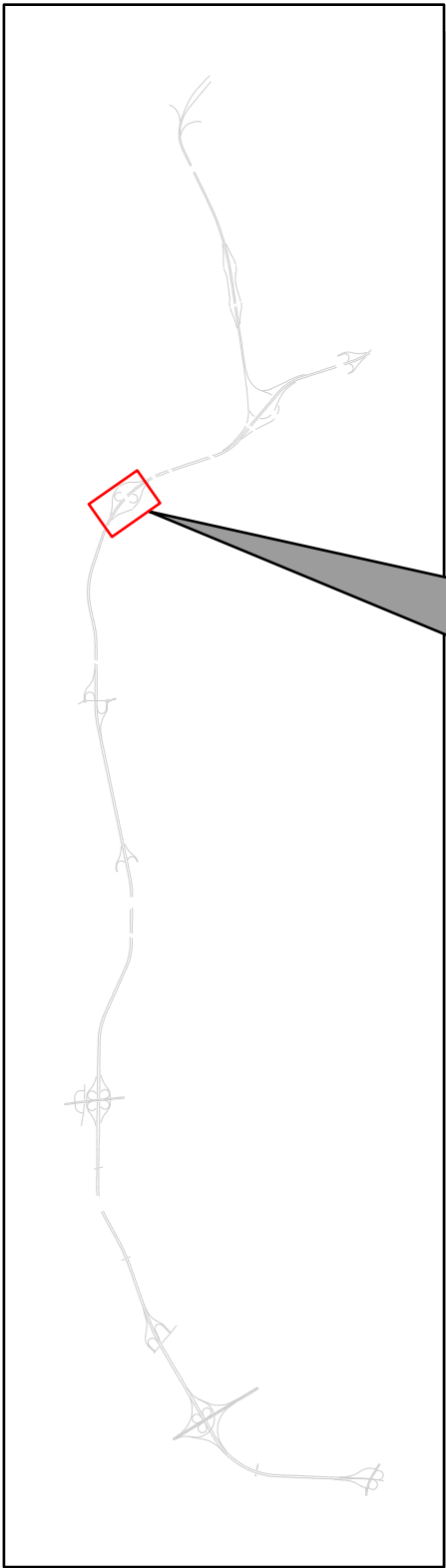


INV_ID	Area_SQYRD
PB_211	559
PB_212	458
PB_213	709
PB_214	708
PB_215	119

INV_ID	Area_SQYRD
PB_218	367
PB_219	576
PB_231	175
PB_232	529



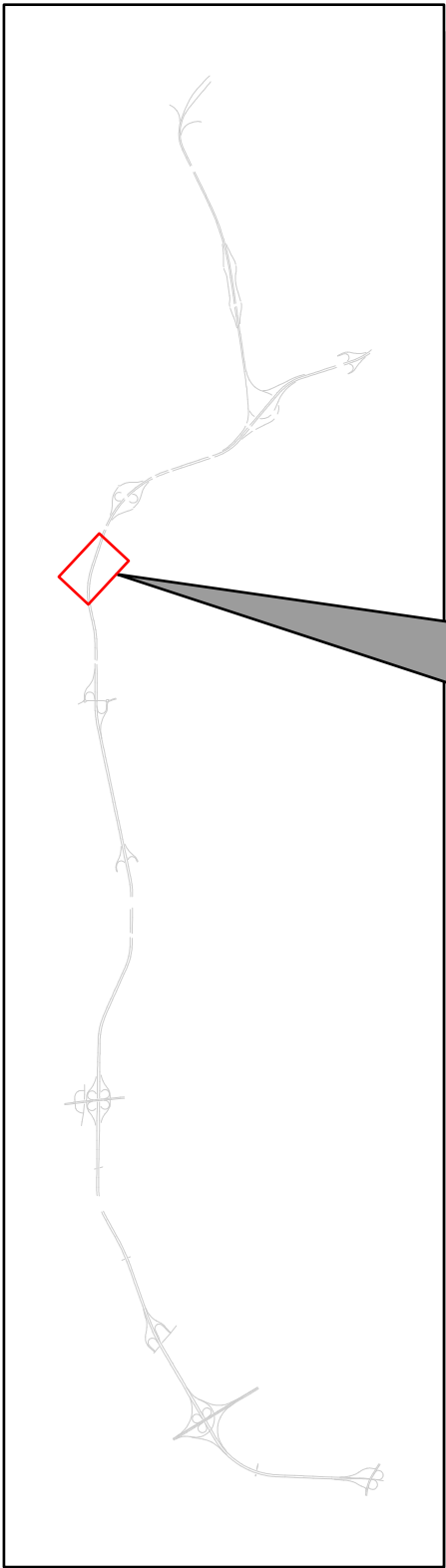
# Triangle Expressway Landscaped Areas: Plant Beds



INV_ID	Area_SQYRD
PB_207	231
PB_208	227
PB_209	645
PB_306	408



# Triangle Expressway Landscaped Areas: Plant Beds



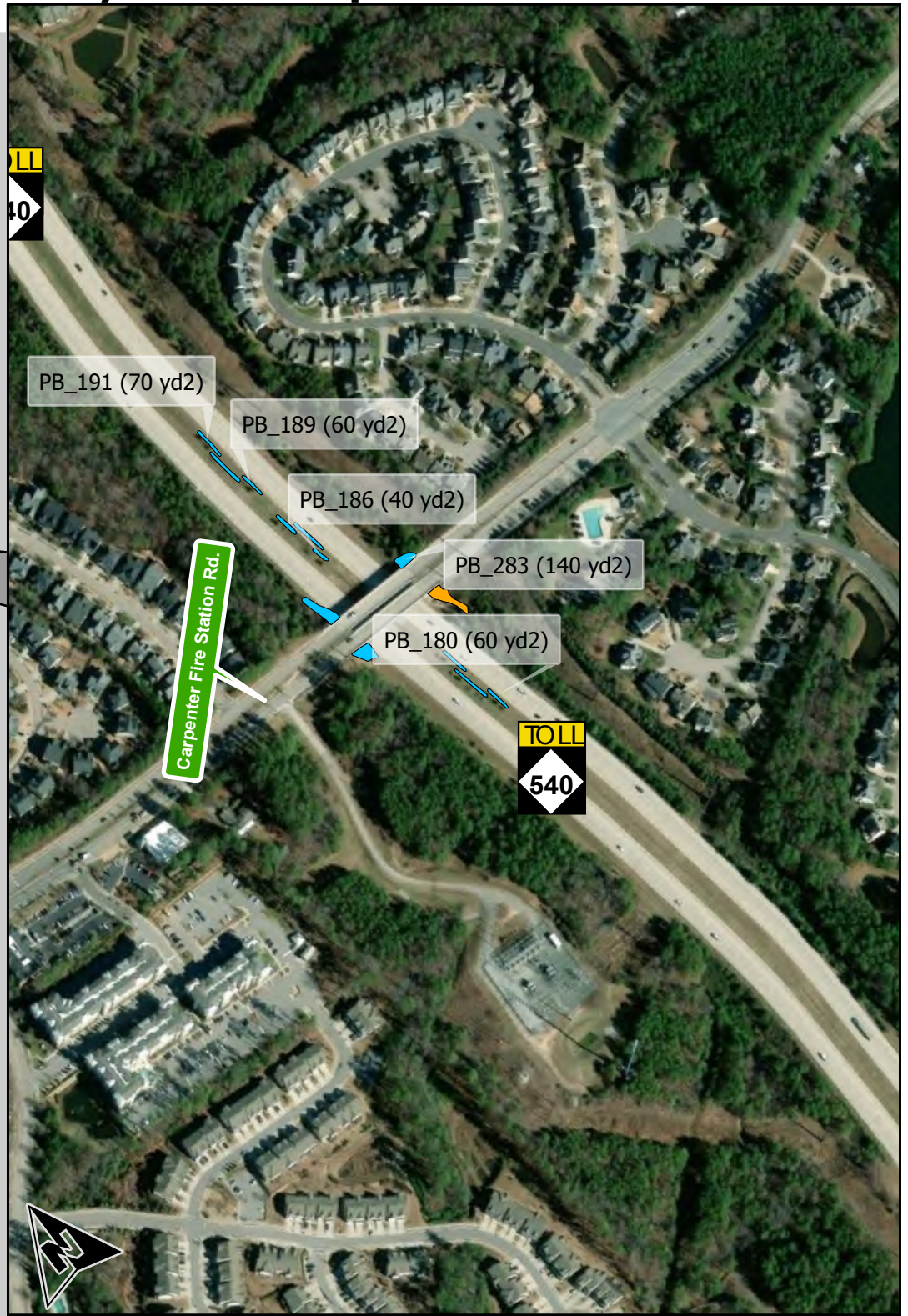
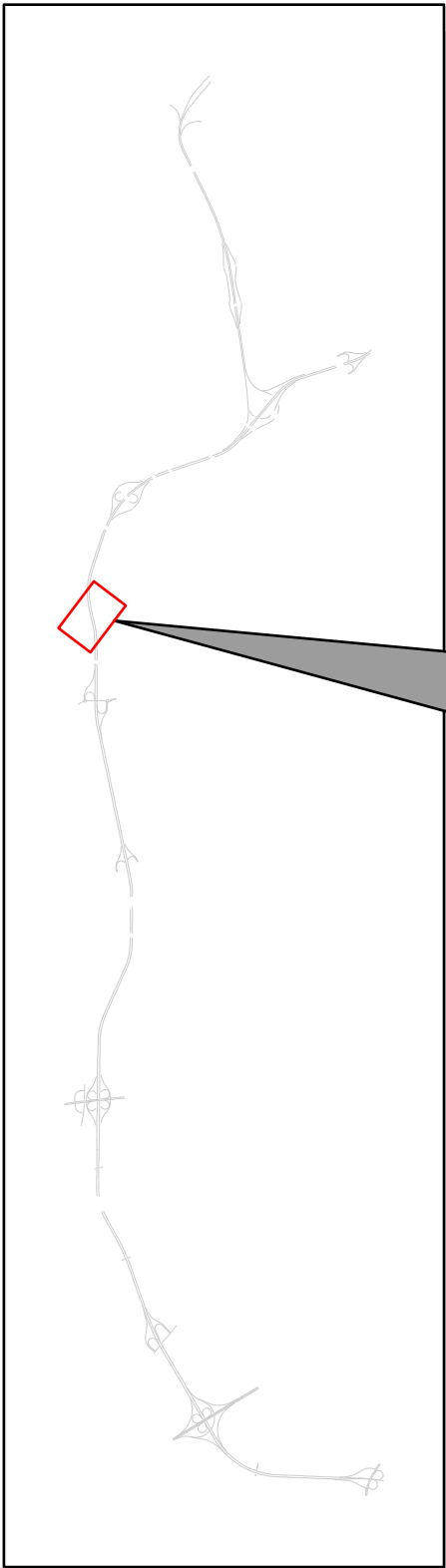
INV_ID	Area_SQYRD
PB_190	98
PB_191	71
PB_192	71
PB_193	72
PB_194	90
PB_195	127
PB_196	75
PB_197	96

INV_ID	Area_SQYRD
PB_198	218
PB_199	245
PB_200	91
PB_201	107
PB_203	157
PB_204	156
PB_298	92
PB_205	200

INV_ID	Area_SQYRD
PB_206	170



# Triangle Expressway Landscaped Areas: Plant Beds

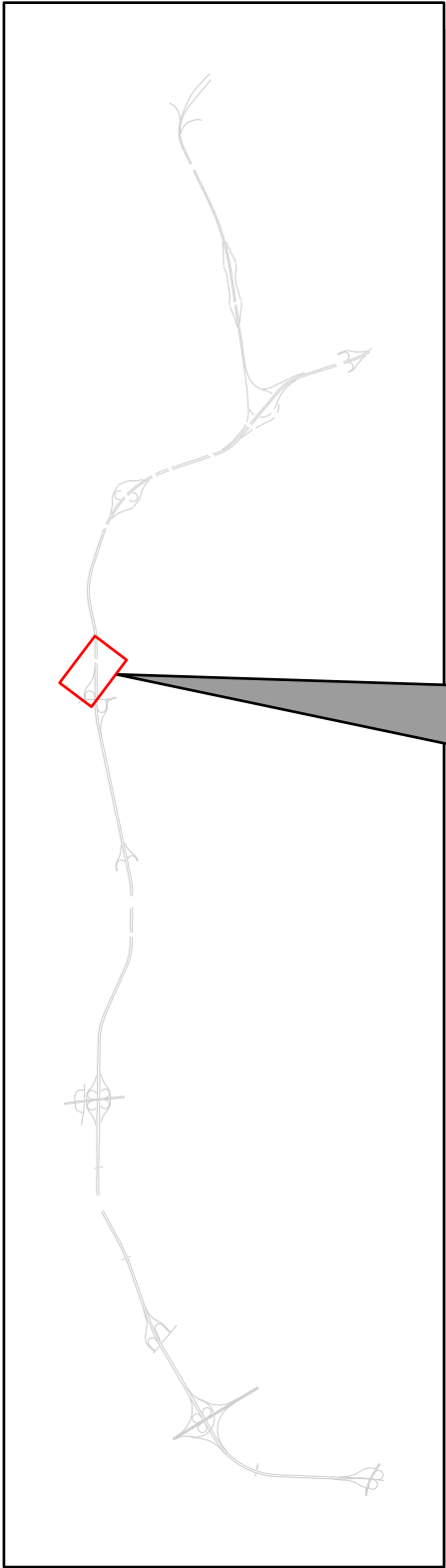


INV_ID	Area_SQYRD
PB_180	58
PB_181	84
PB_183	65
PB_184	253
PB_185	246
PB_186	45
PB_187	87

INV_ID	Area_SQYRD
PB_188	69
PB_189	55
PB_190	98
PB_191	71
PB_283	137
PB_284	186



# Triangle Expressway Landscaped Areas: Plant Beds

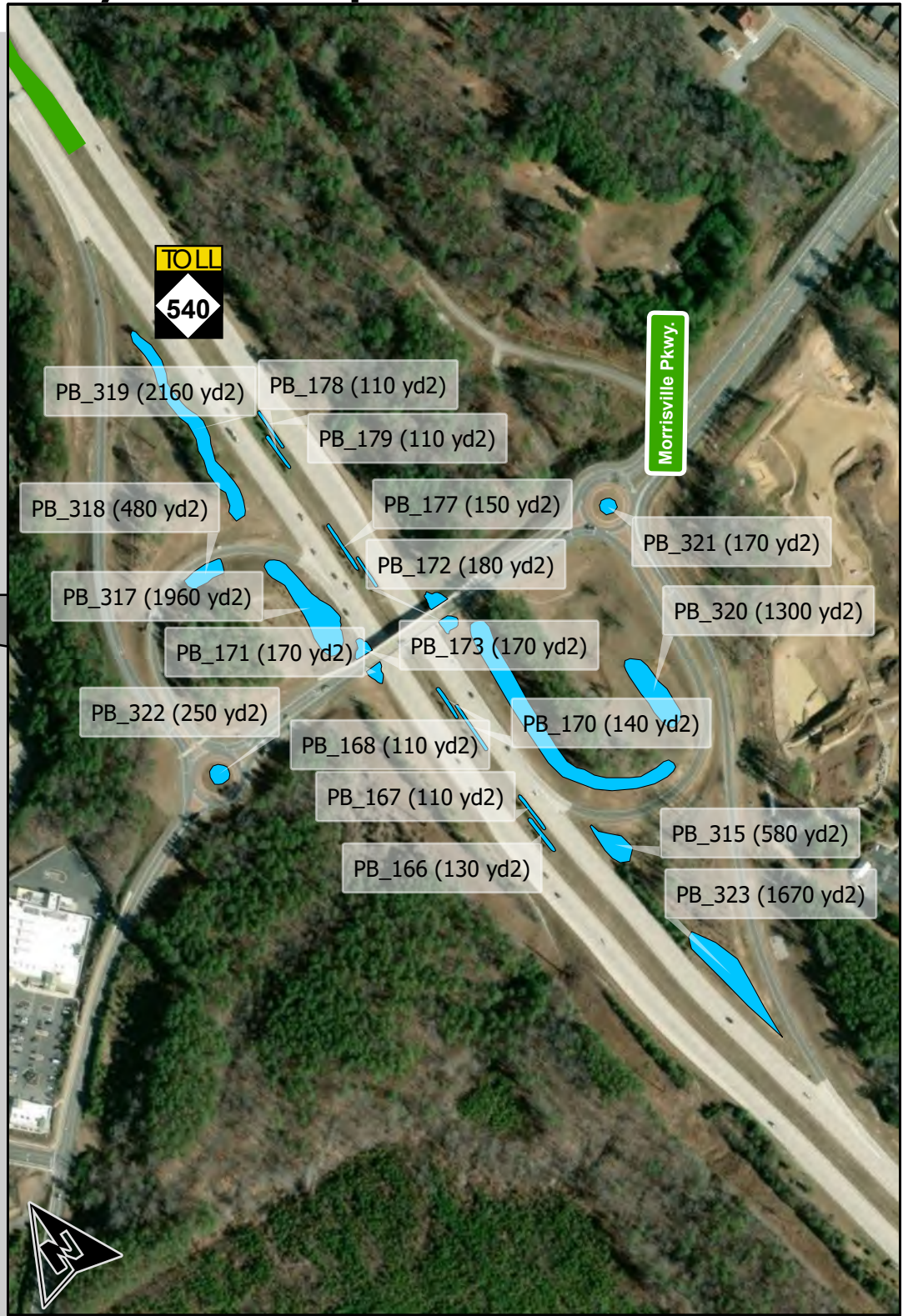
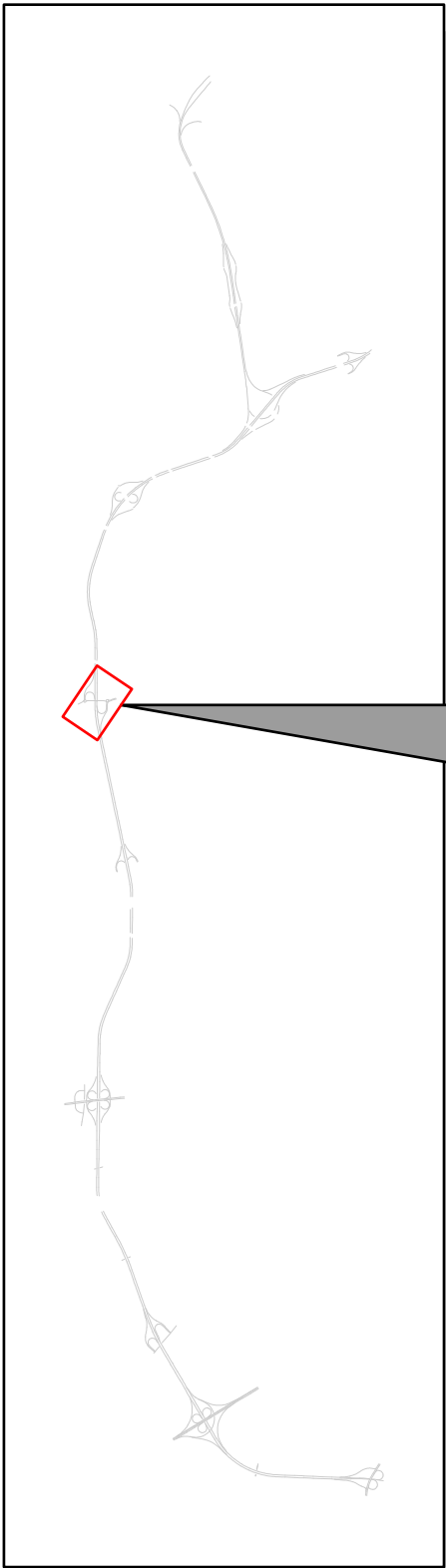


INV_ID	Area_SQYRD
PB_171	165
PB_173	166
PB_174	184
PB_175	84
PB_177	151
PB_178	115

INV_ID	Area_SQYRD
PB_179	110
PB_317	1964
PB_318	484
PB_319	2163
PB_322	245



# Triangle Expressway Landscaped Areas: Plant Beds

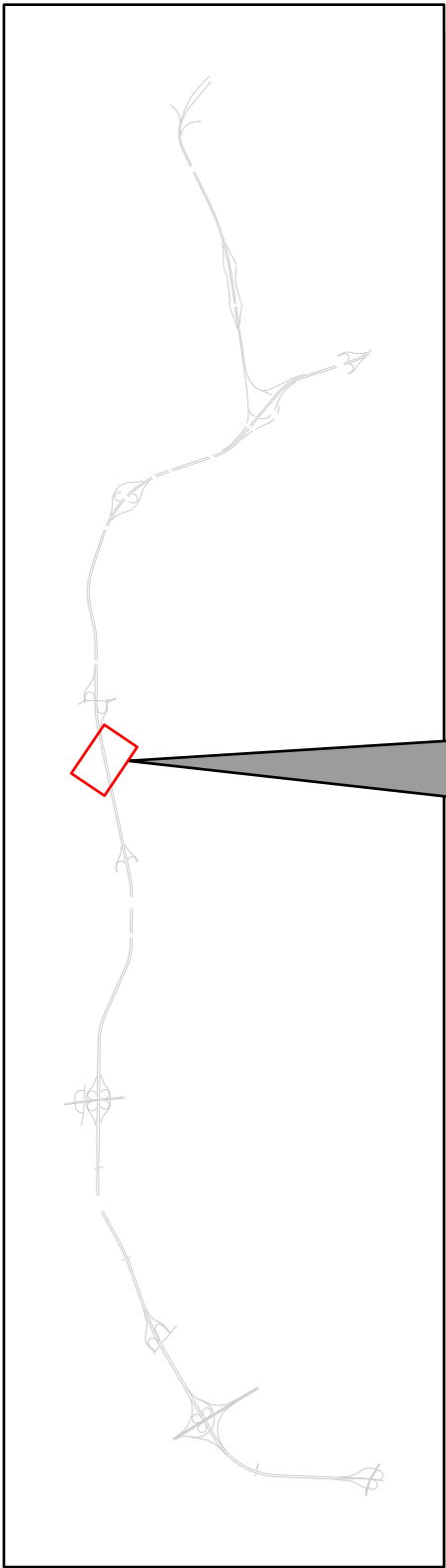


INV_ID	Area_SQYRD
PB_166	132
PB_167	115
PB_168	105
PB_170	143
PB_171	165
PB_172	175
PB_173	166
PB_174	184

INV_ID	Area_SQYRD
PB_175	84
PB_177	151
PB_178	115
PB_179	110
PB_315	578
PB_316	3511
PB_317	1964
PB_318	484



# Triangle Expressway Landscaped Areas: Plant Beds

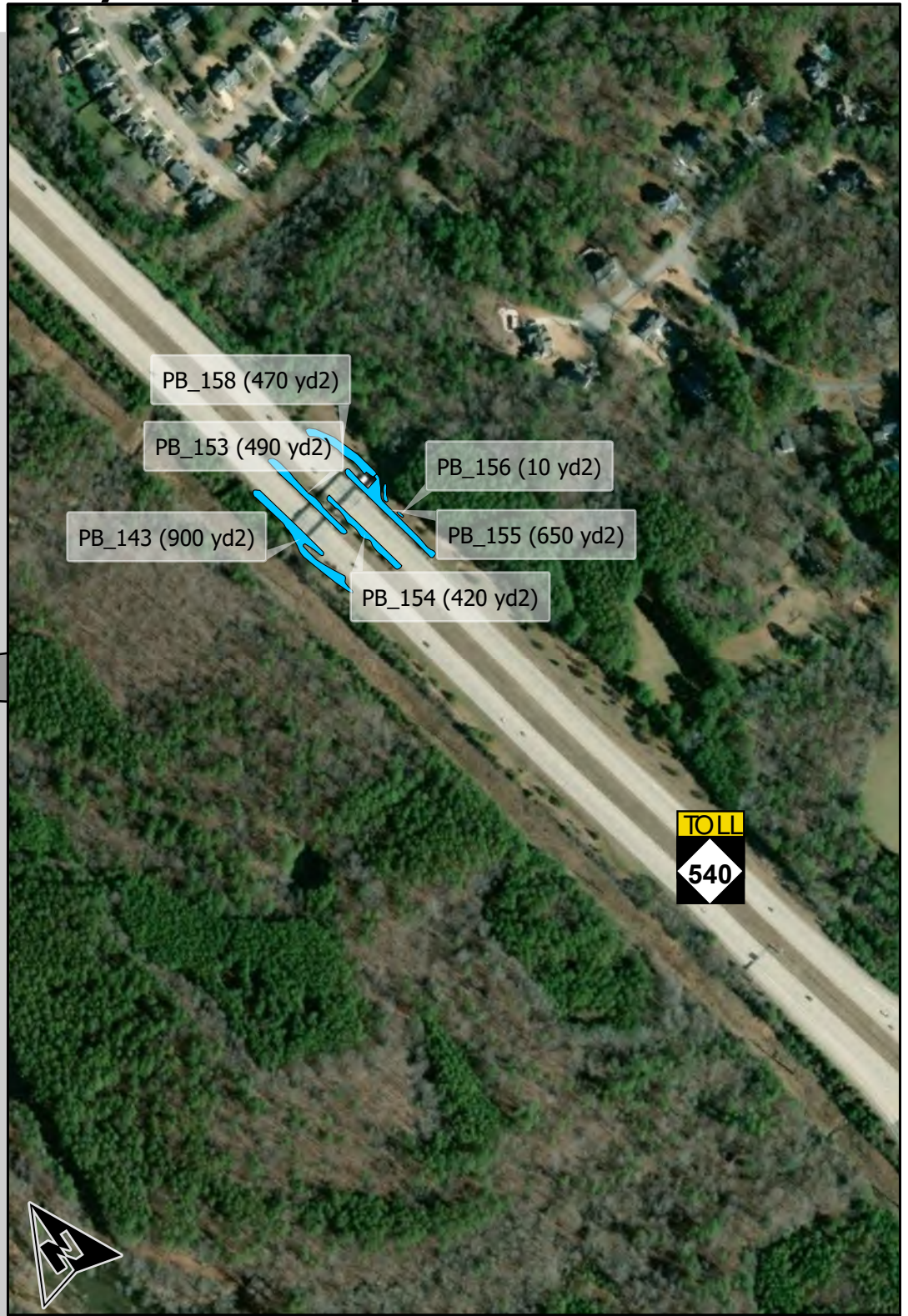
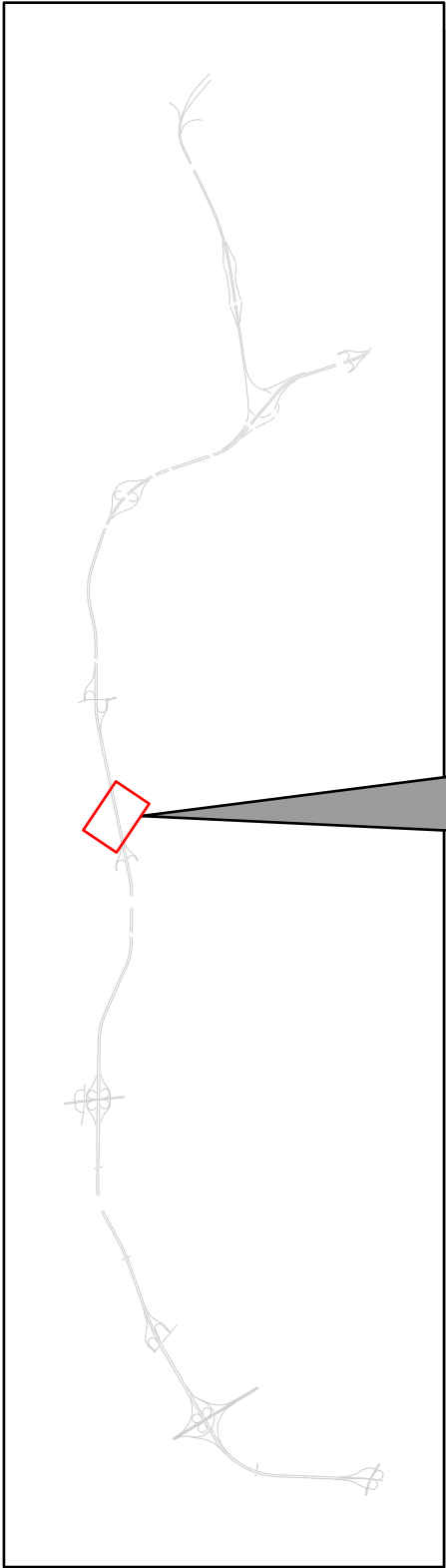


INV_ID	Area_SQYRD
PB_285	127
PB_286	147
PB_287	131
PB_288	163





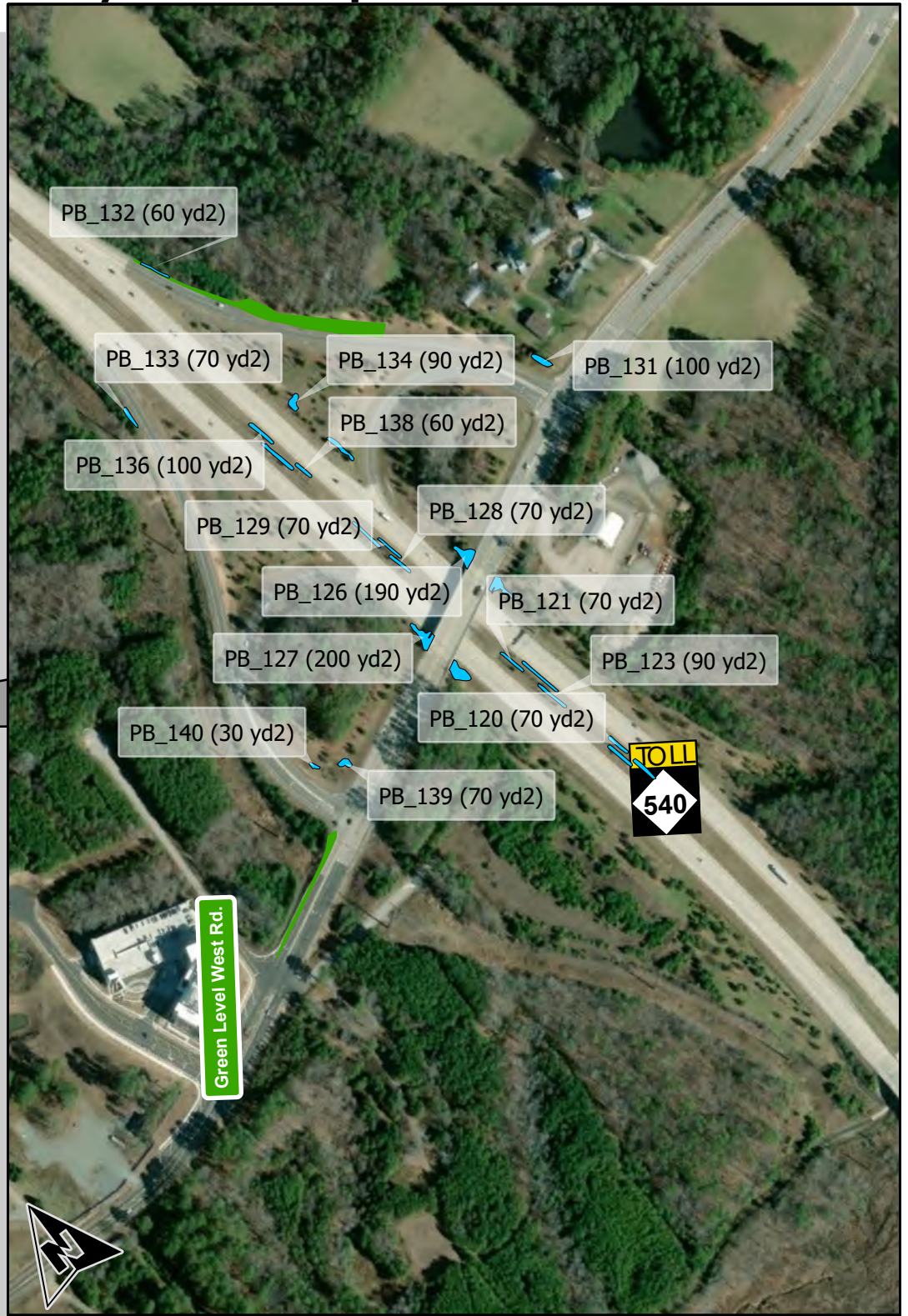
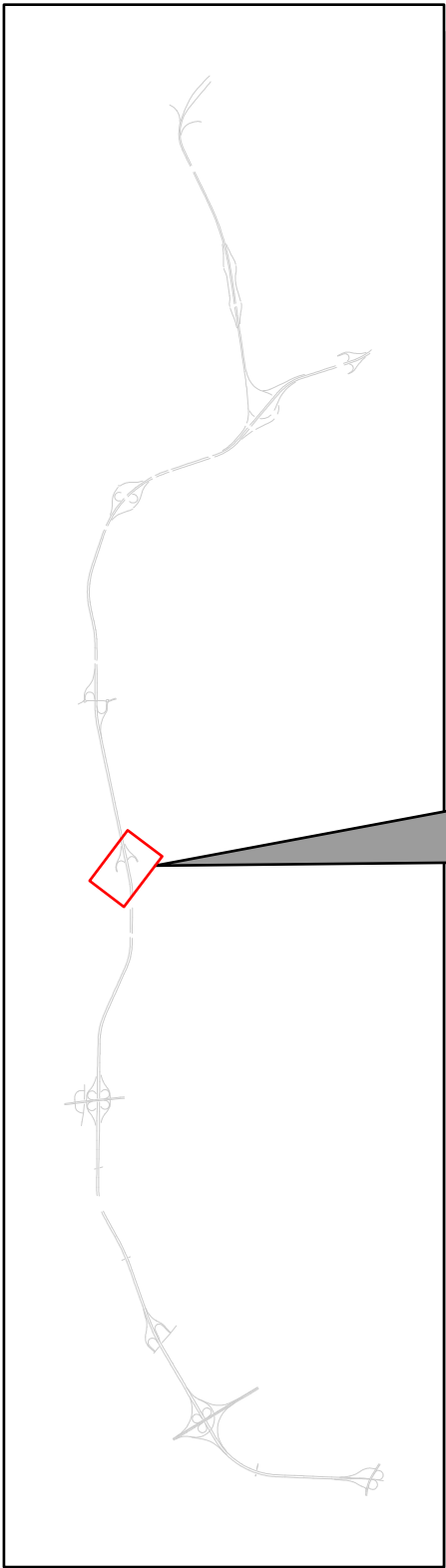
# Triangle Expressway Landscaped Areas: Plant Beds



INV_ID	Area_SQYRD
PB_143	901
PB_154	425
PB_153	494
PB_155	646
PB_156	12
PB_157	39
PB_158	470



# Triangle Expressway Landscaped Areas: Plant Beds

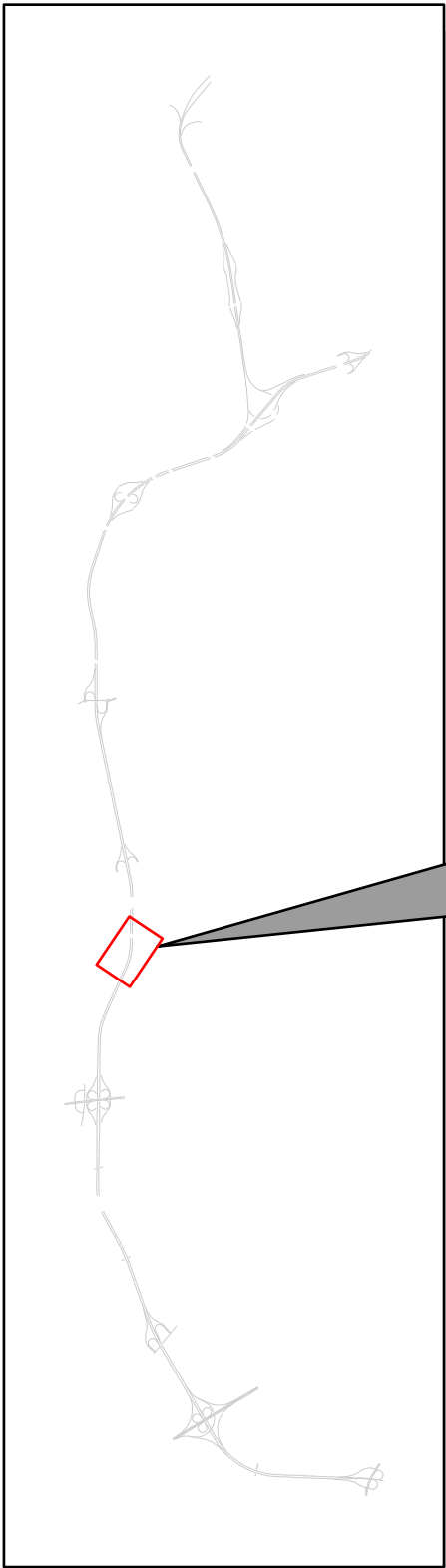


INV_ID	Area_SQYRD
PB_118	90
PB_119	91
PB_120	72
PB_121	74
PB_122	105
PB_123	94
PB_124	157
PB_125	202

INV_ID	Area_SQYRD
PB_126	189
PB_127	195
PB_128	73
PB_129	68
PB_130	96
PB_131	99
PB_132	62
PB_133	72



# Triangle Expressway Landscaped Areas: Plant Beds

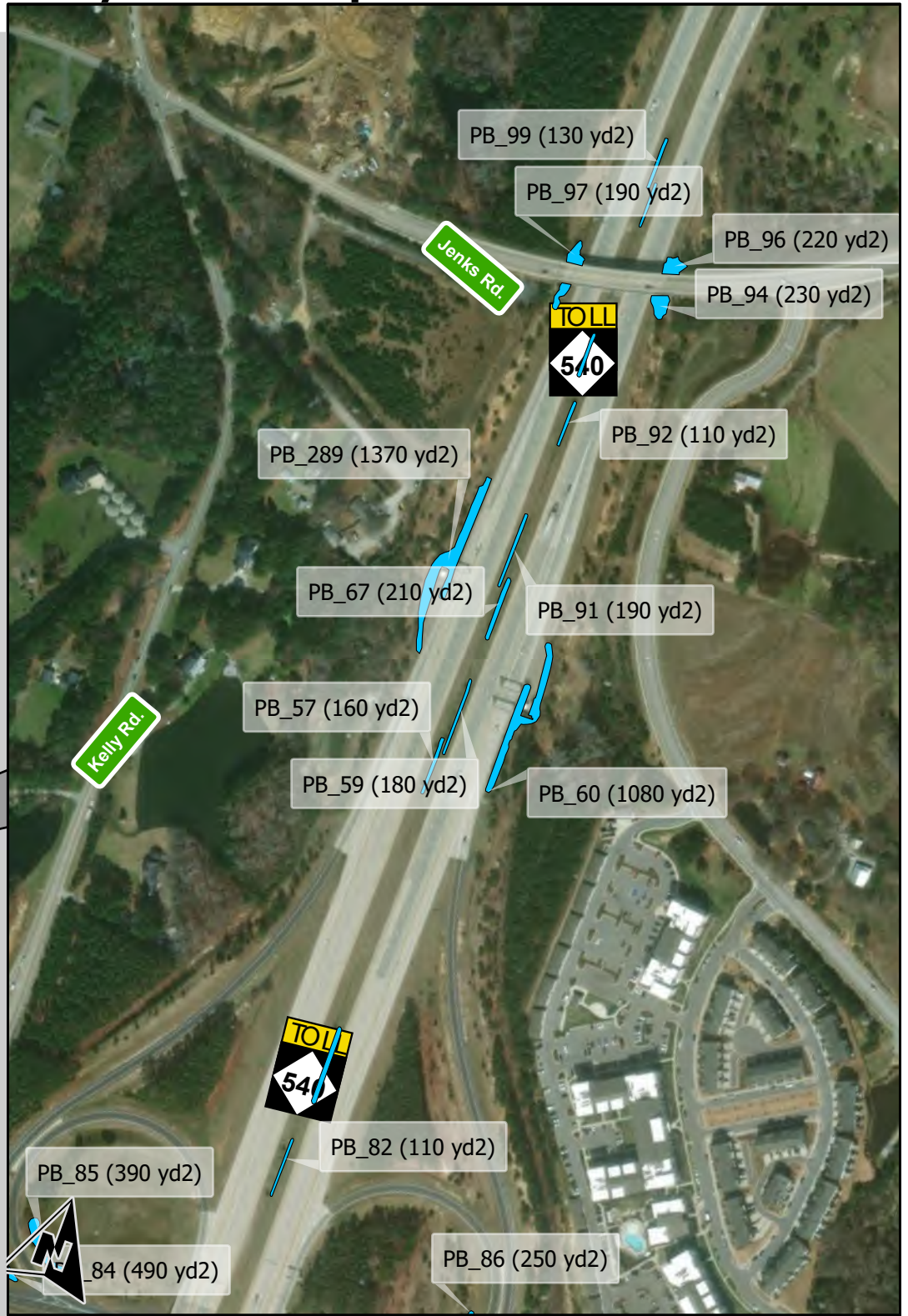
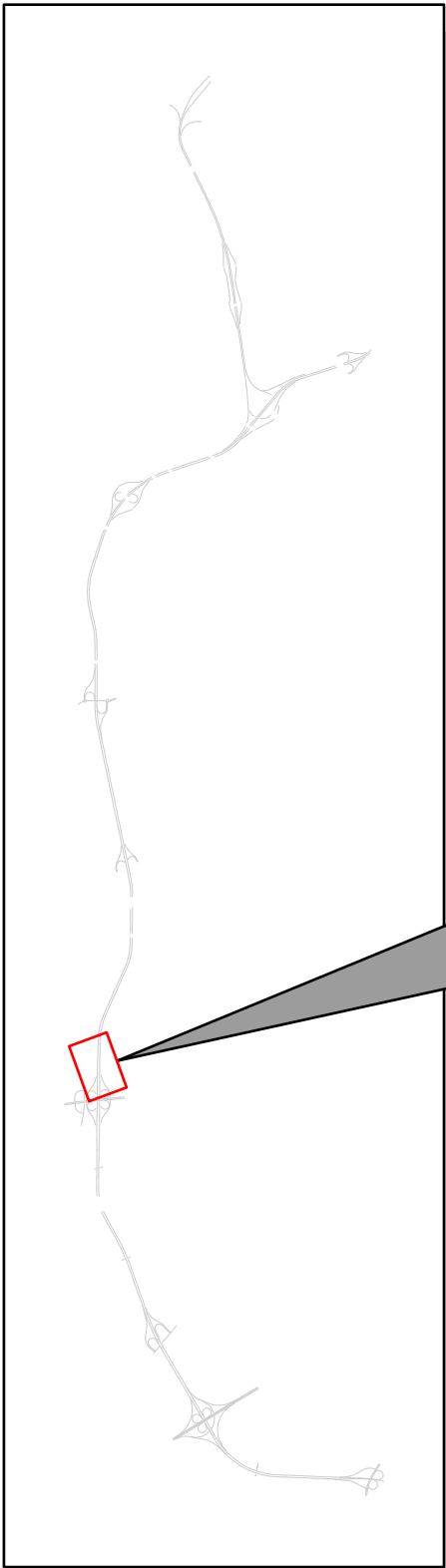


INV_ID	Area_SQYRD
PB_101	127
PB_102	54
PB_103	120
PB_104	86
PB_105	74
PB_106	246
PB_107	171
PB_108	209

INV_ID	Area_SQYRD
PB_110	196
PB_111	72
PB_112	85
PB_114	124
PB_115	86
PB_116	130
PB_117	61



# Triangle Expressway Landscaped Areas: Plant Beds

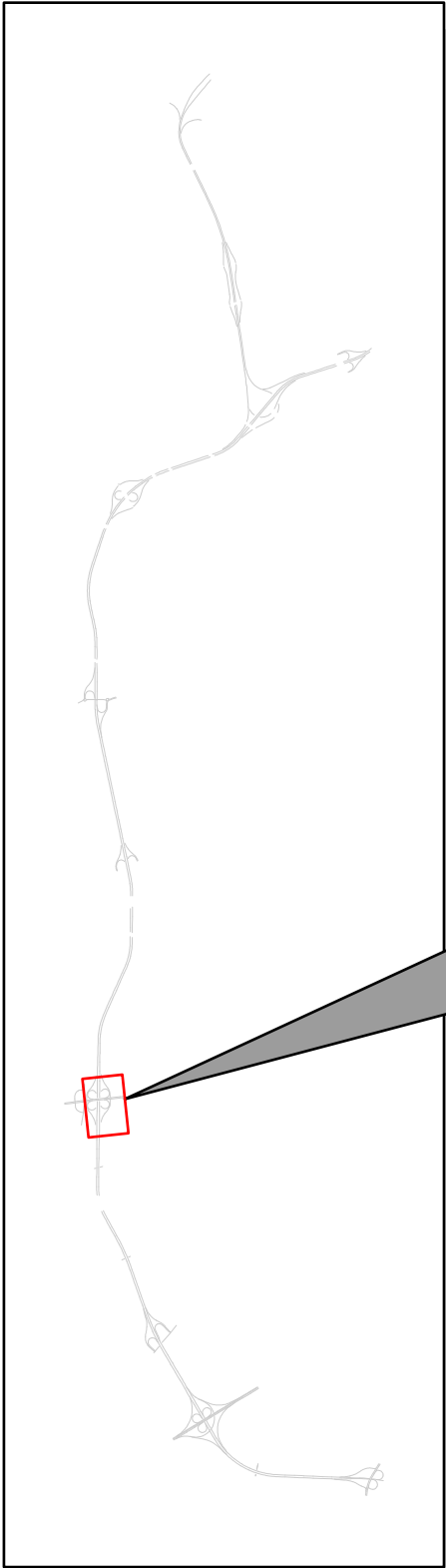


INV_ID	Area_SQYRD
PB_57	155
PB_59	177
PB_60	1079
PB_67	214
PB_82	114
PB_84	495
PB_85	389
PB_86	251

INV_ID	Area_SQYRD
PB_88	283
PB_91	191
PB_92	114
PB_93	125
PB_94	234
PB_95	142
PB_96	217
PB_97	186



# Triangle Expressway Landscaped Areas: Plant Beds

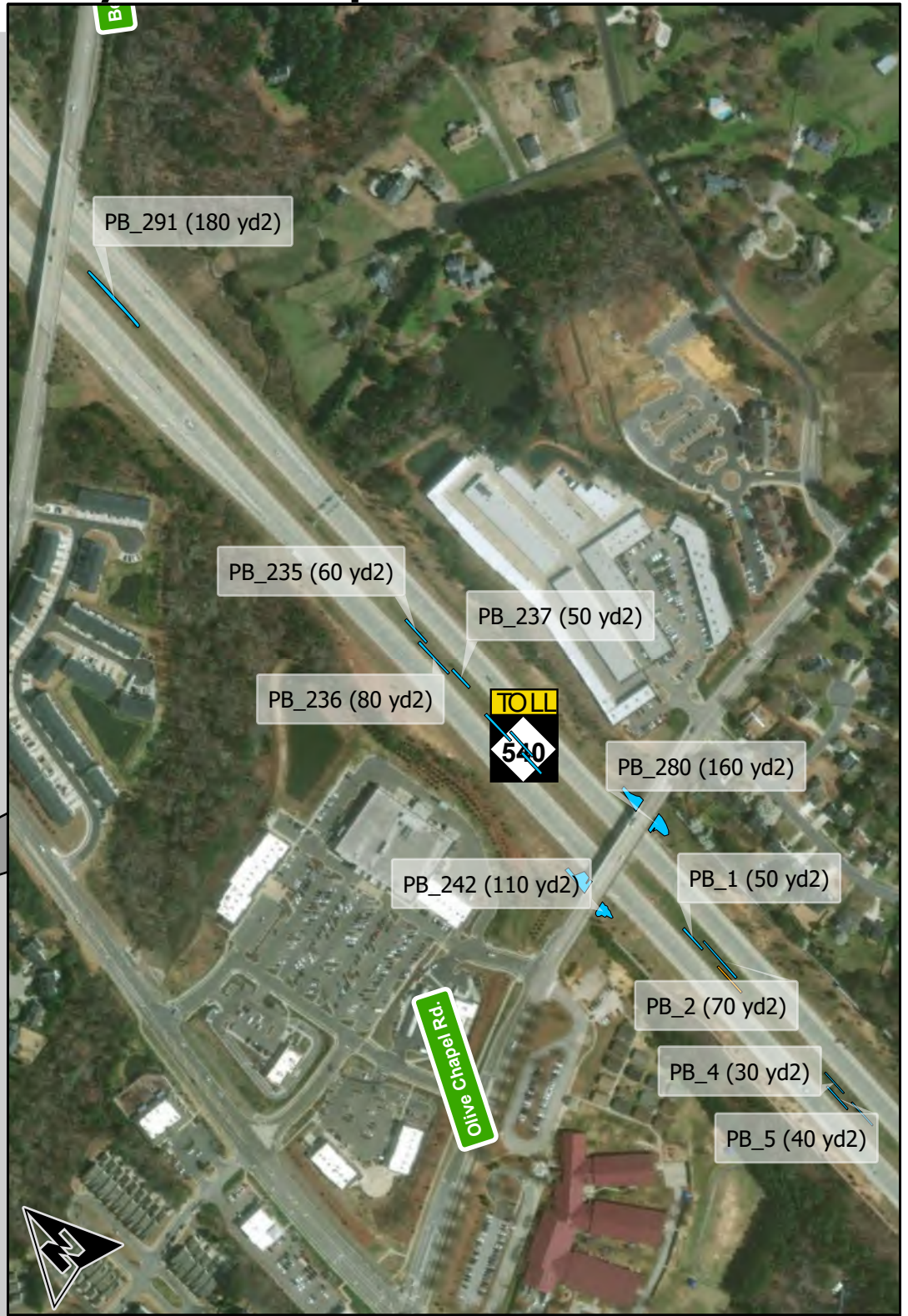
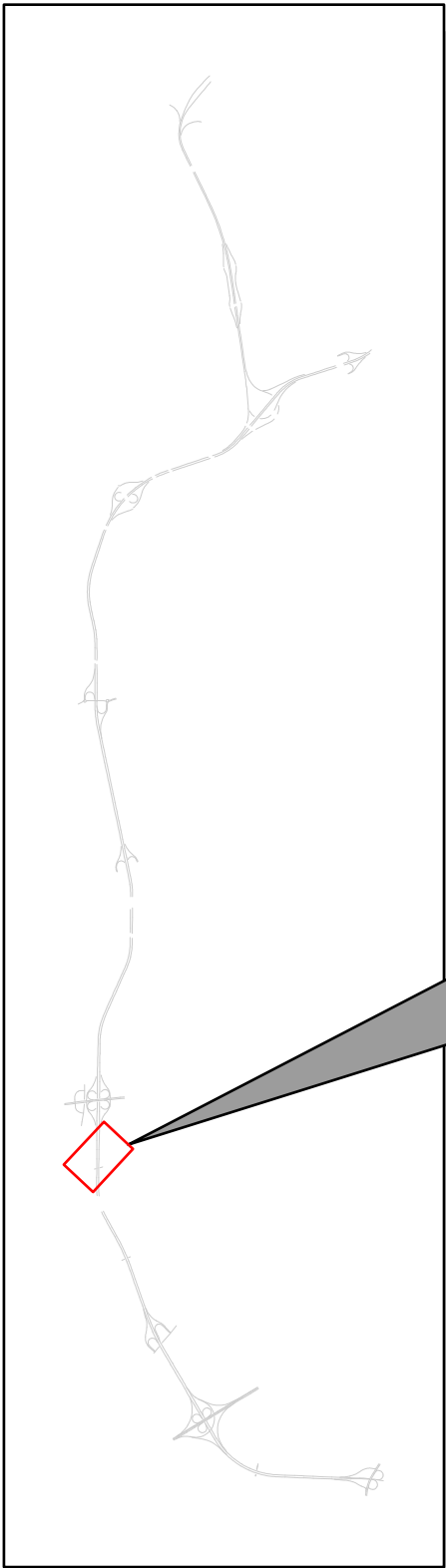


INV_ID	Area_SQYRD
PB_82	114
PB_83	367
PB_84	495
PB_85	389
PB_86	251
PB_87	389
PB_88	283
PB_230	531

INV_ID	Area_SQYRD
PB_233	269
PB_234	395
PB_282	218
PB_290	183
PB_291	183
PB_299	129
PB_300	167
PB_301	137



# Triangle Expressway Landscaped Areas: Plant Beds

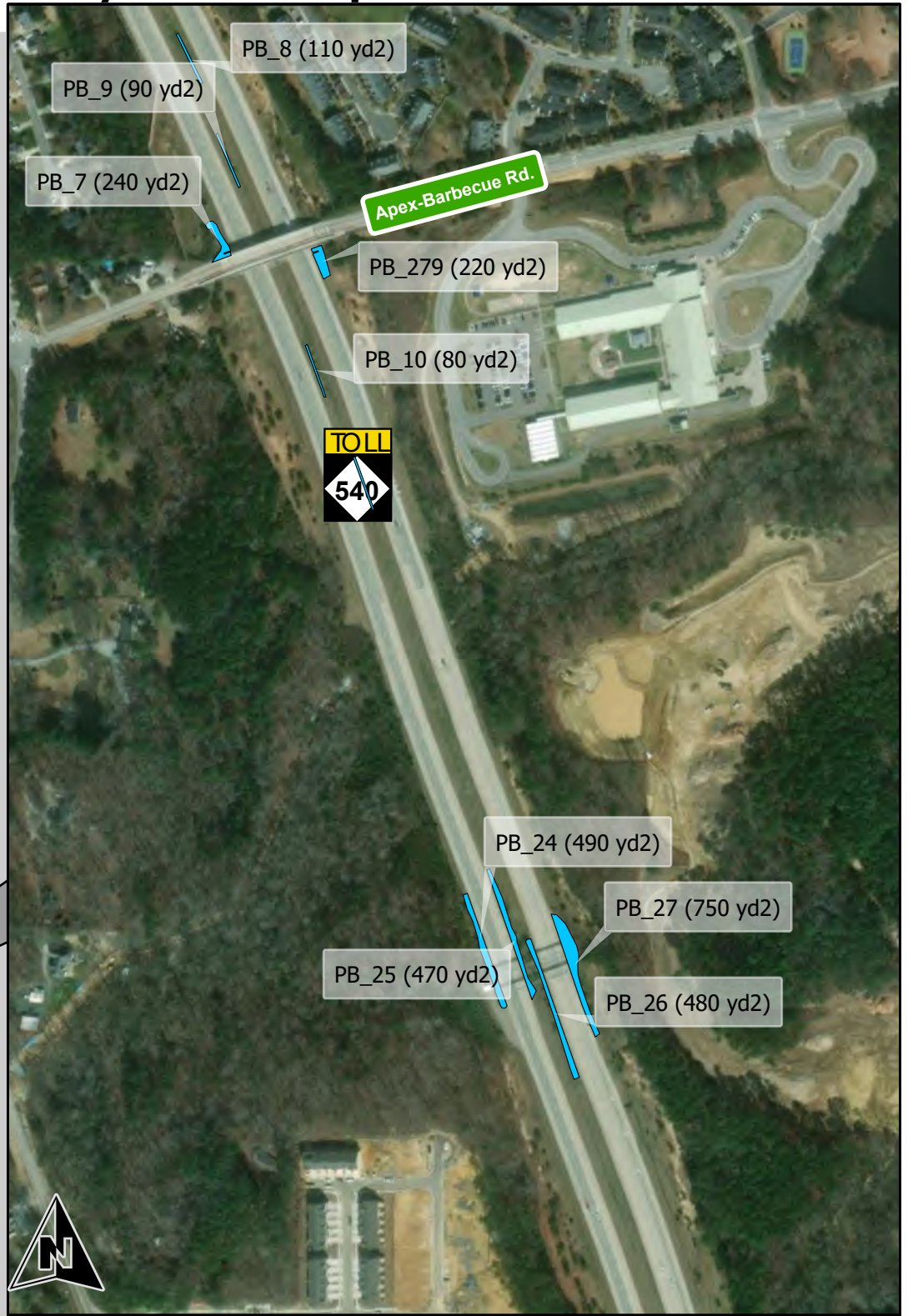
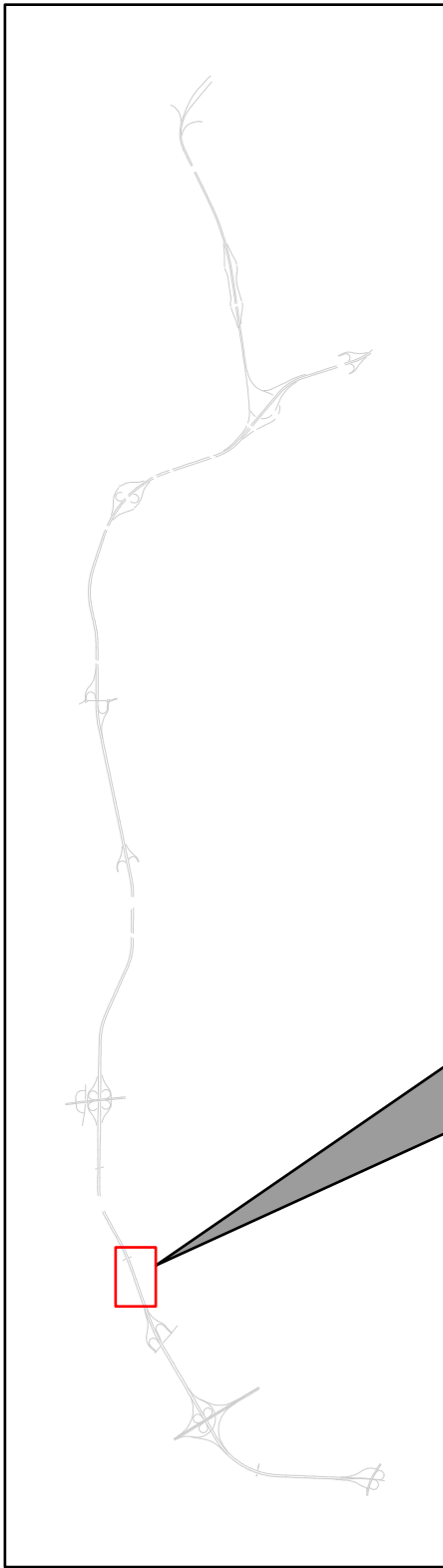


INV_ID	Area_SQYRD
PB_1	51
PB_2	74
PB_3	54
PB_4	33
PB_5	42
PB_6	35
PB_235	58
PB_236	82

INV_ID	Area_SQYRD
PB_237	49
PB_238	74
PB_239	59
PB_240	60
PB_241	185
PB_242	107
PB_280	164
PB_281	137



# Triangle Expressway Landscaped Areas: Plant Beds

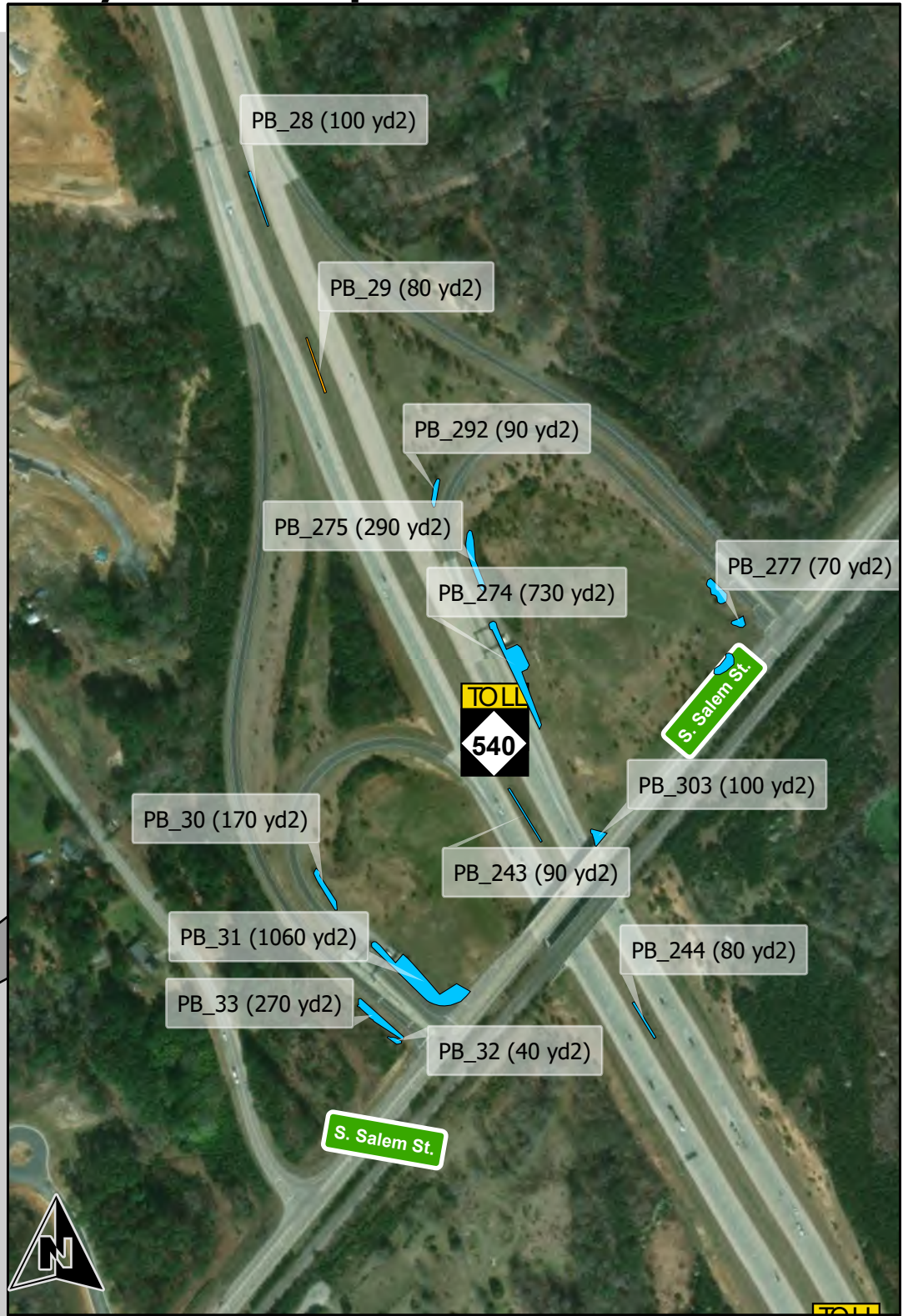
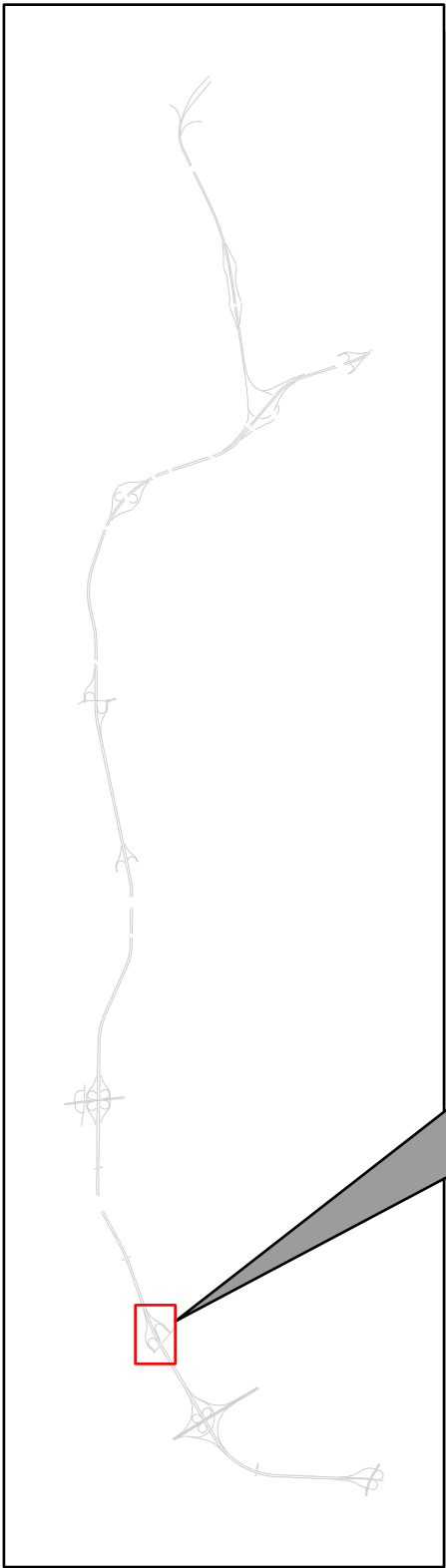


INV_ID	Area_SQYRD
PB_7	241
PB_8	105
PB_9	89
PB_10	80
PB_11	86

INV_ID	Area_SQYRD
PB_24	495
PB_25	467
PB_26	475
PB_27	746
PB_279	220



# Triangle Expressway Landscaped Areas: Plant Beds



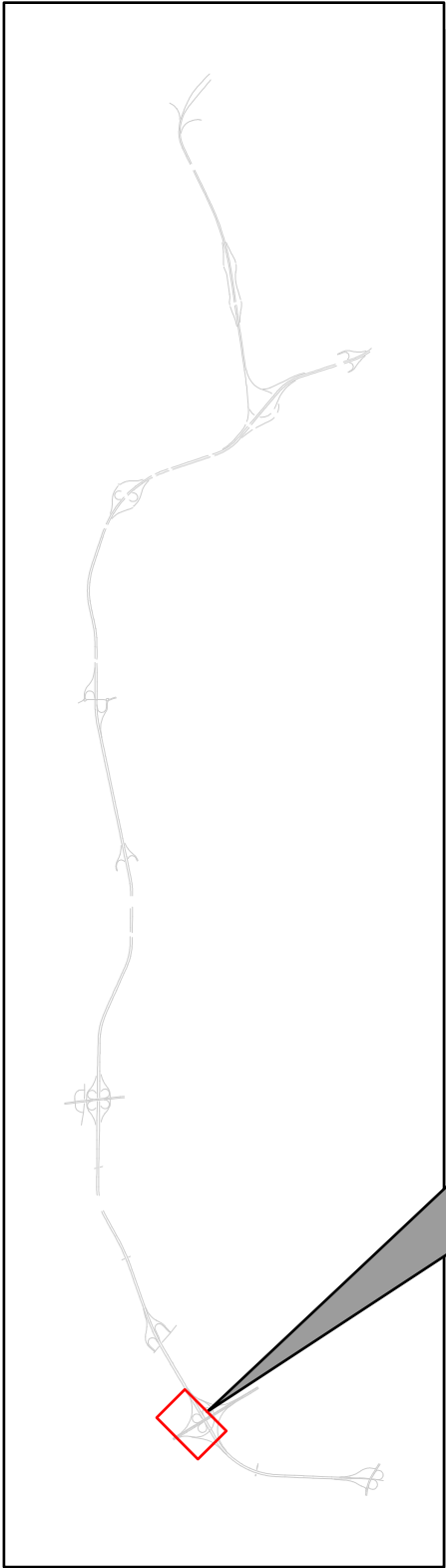
INV_ID	Area_SQYRD
PB_28	99
PB_29	82
PB_30	167
PB_31	1062
PB_32	39
PB_33	275
PB_243	94
PB_244	77

INV_ID	Area_SQYRD
PB_274	732
PB_275	285
PB_276	158
PB_277	71
PB_278	183
PB_292	92
PB_303	101





# Triangle Expressway Landscaped Areas: Plant Beds

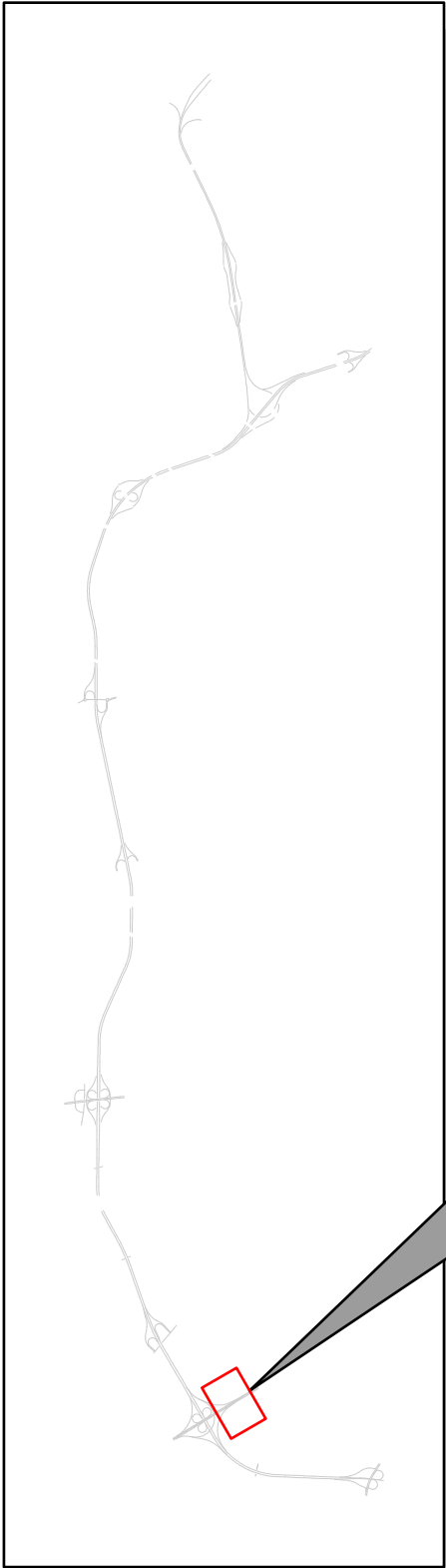


INV_ID	Area_SQYRD
PB_245	148
PB_246	189
PB_247	200
PB_248	184
PB_249	258
PB_250	136
PB_251	87
PB_252	179

INV_ID	Area_SQYRD
PB_253	60
PB_254	17
PB_255	310
PB_256	143
PB_266	127
PB_267	105
PB_268	87
PB_269	75



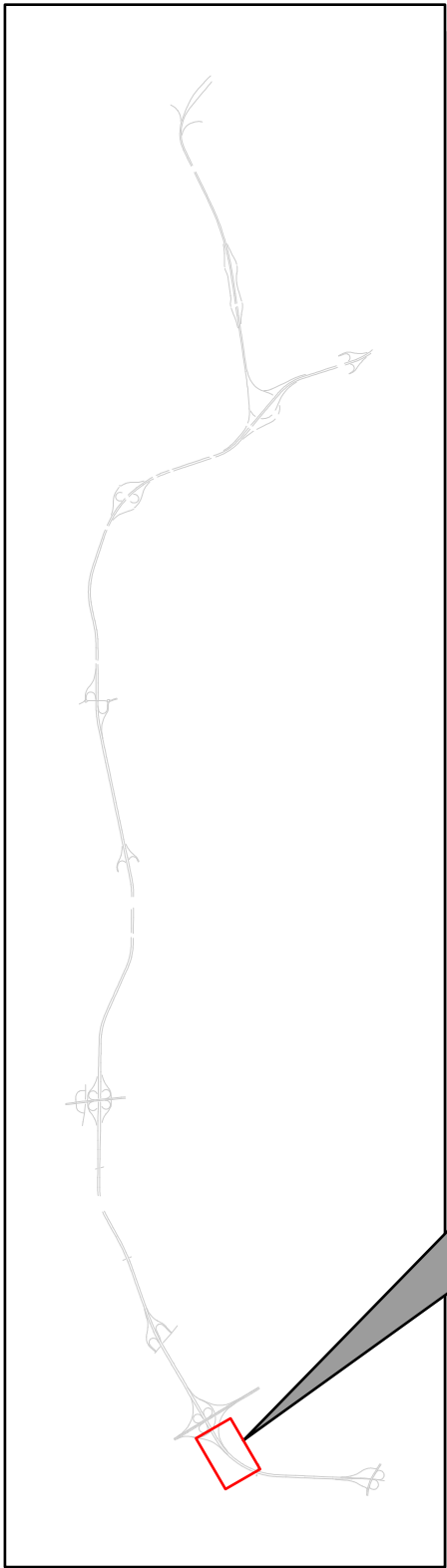
# Triangle Expressway Landscaped Areas: Plant Beds



INV_ID	Area_SQYRD
PB_272	179
PB_273	688



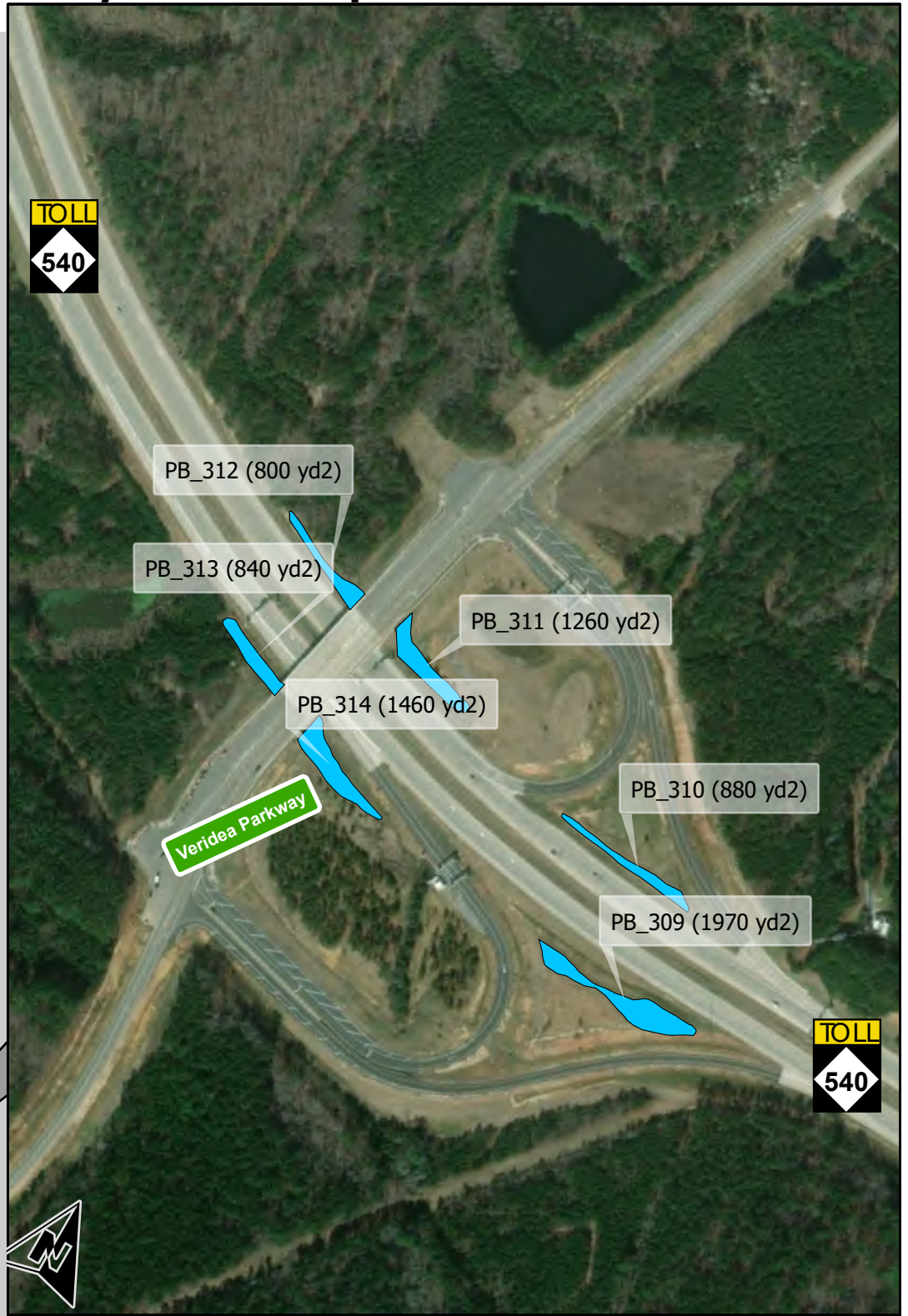
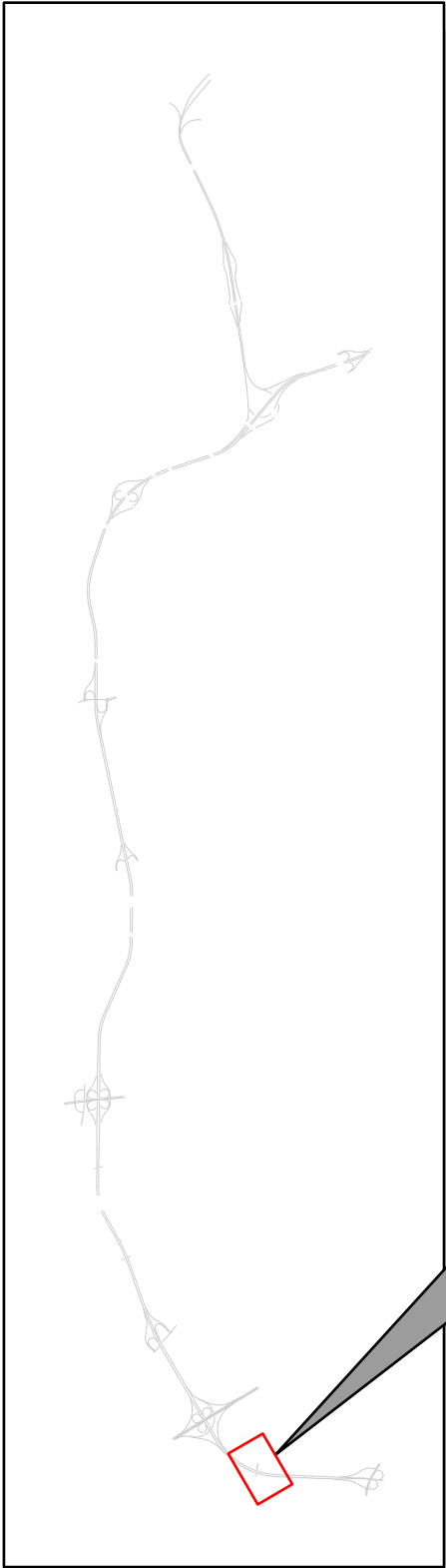
# Triangle Expressway Landscaped Areas: Plant Beds



INV_ID	Area_SQYRD
PB_255	310
PB_256	143
PB_257	181
PB_312	802
PB_311	1260
PB_313	839



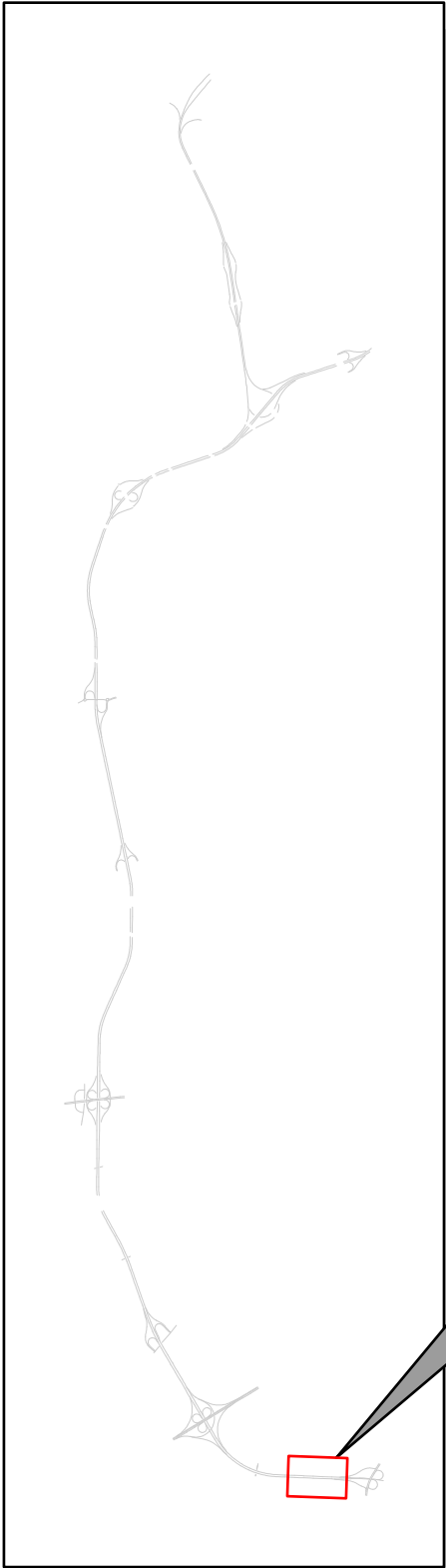
# Triangle Expressway Landscaped Areas: Plant Beds



INV_ID	Area_SQYRD
PB_312	802
PB_311	1260
PB_313	839
PB_314	1458
PB_310	877
PB_309	1973



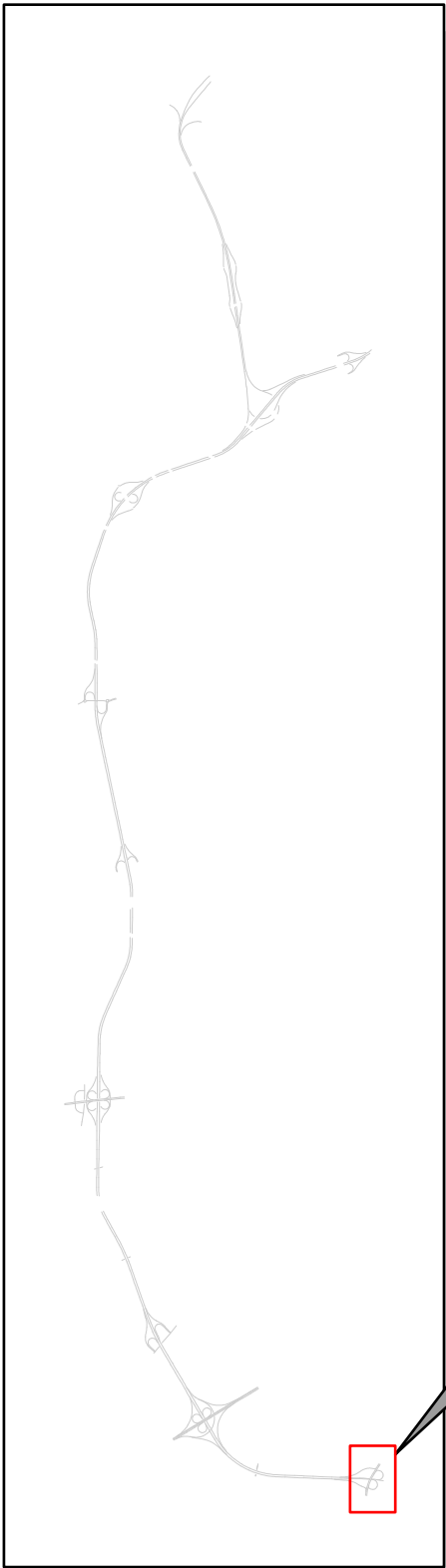
# Triangle Expressway Landscaped Areas: Plant Beds



INV_ID	Area_SQYRD
PB_258	554
PB_259	405
PB_260	359
PB_265	912



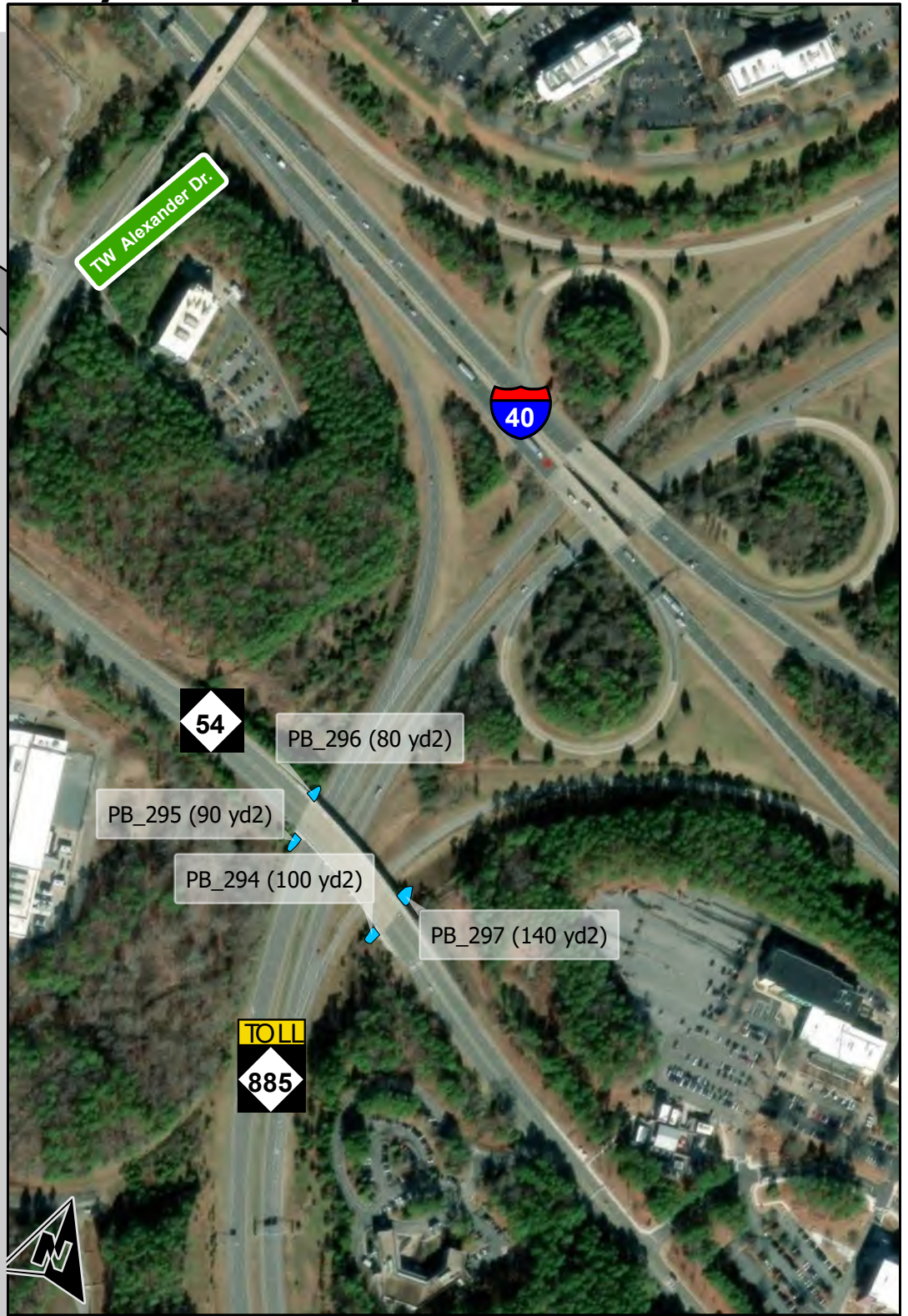
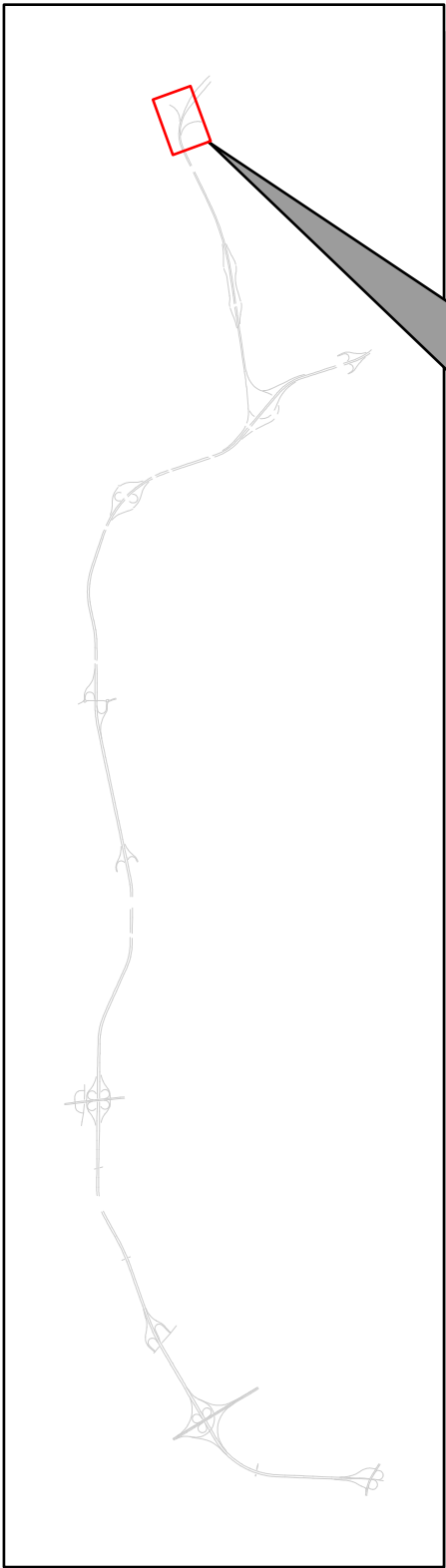
# Triangle Expressway Landscaped Areas: Plant Beds



INV_ID	Area_SQYRD
PB_261	234
PB_262	307
PB_263	377
PB_264	328
PB_304	470



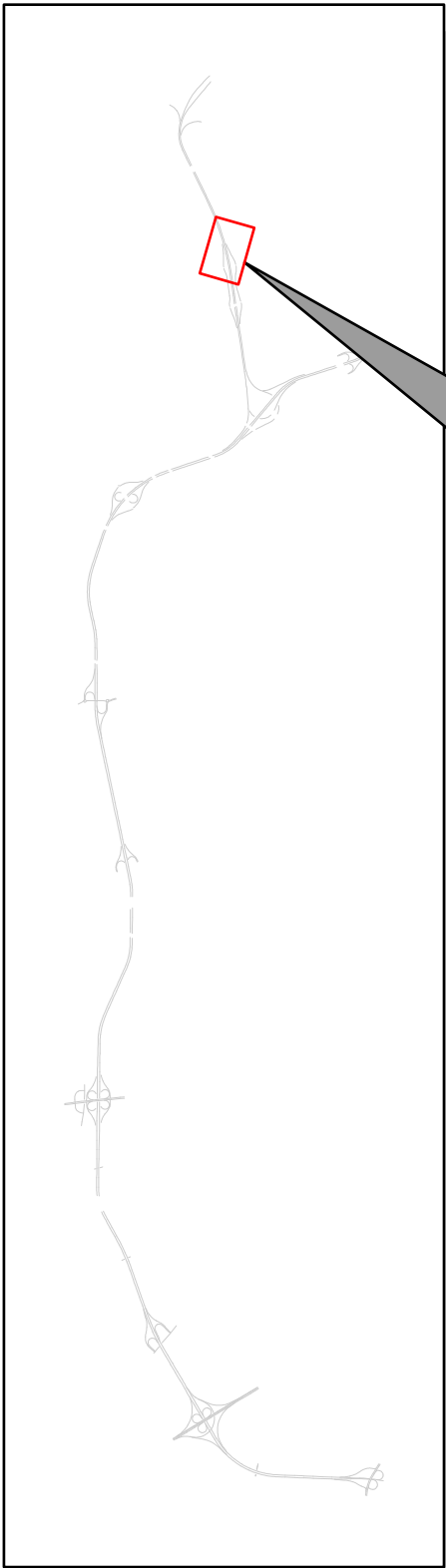
# Triangle Expressway Landscaped Areas: Plant Beds



INV_ID	Area_SQYRD
PB_294	99
PB_295	92
PB_296	81
PB_297	136



# Triangle Expressway Landscaped Areas: Plant Beds



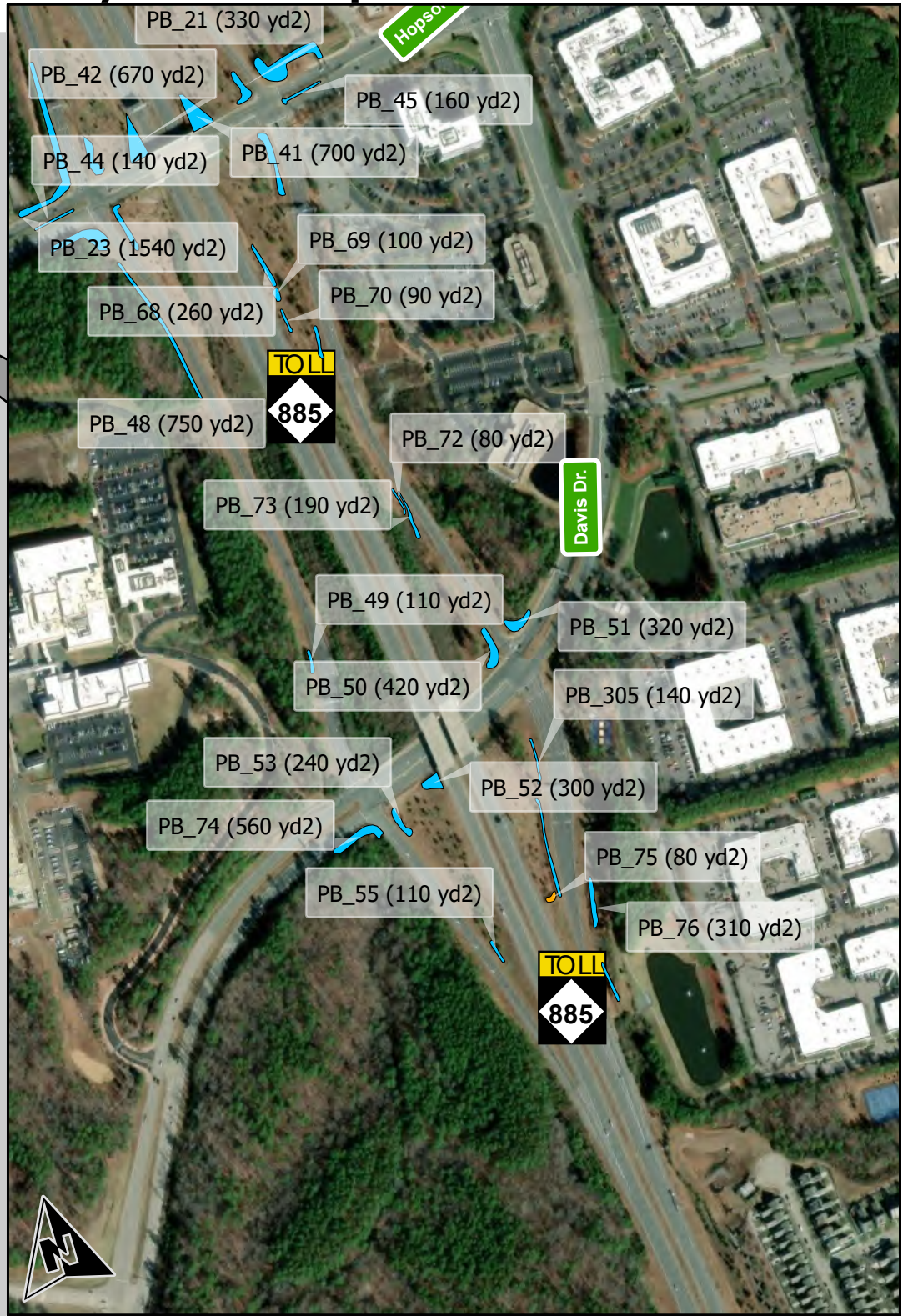
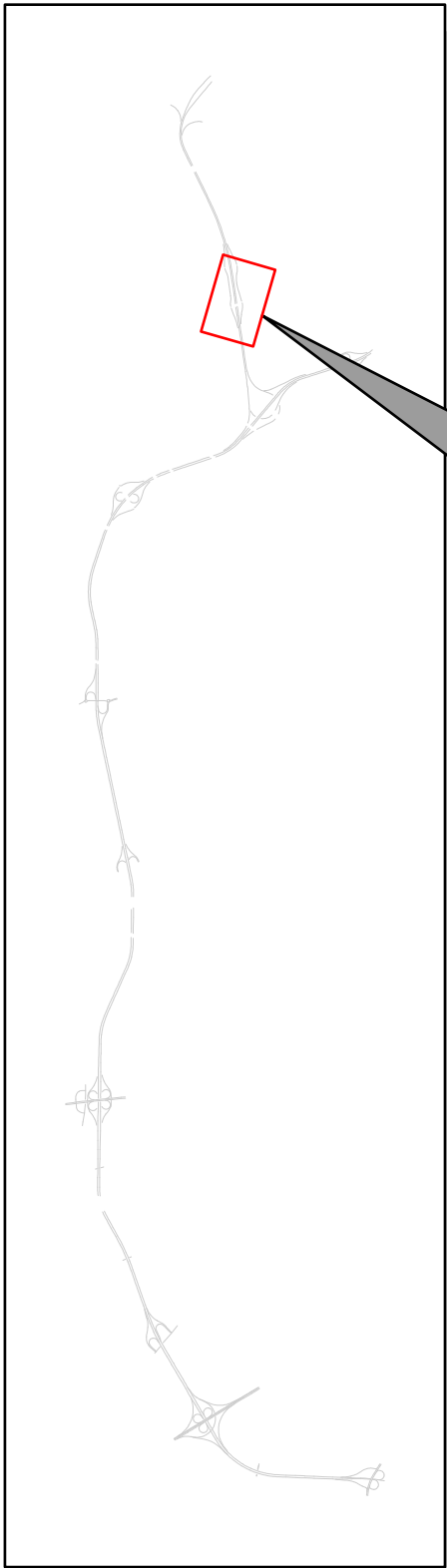
INV_ID	Area_SQYRD
PB_21	332
PB_22	1198
PB_23	1536
PB_34	517
PB_35	324
PB_36	682
PB_37	305
PB_38	622

INV_ID	Area_SQYRD
PB_39	575
PB_40	525
PB_41	701
PB_42	672
PB_43	388
PB_44	145
PB_45	162
PB_46	338





# Triangle Expressway Landscaped Areas: Plant Beds



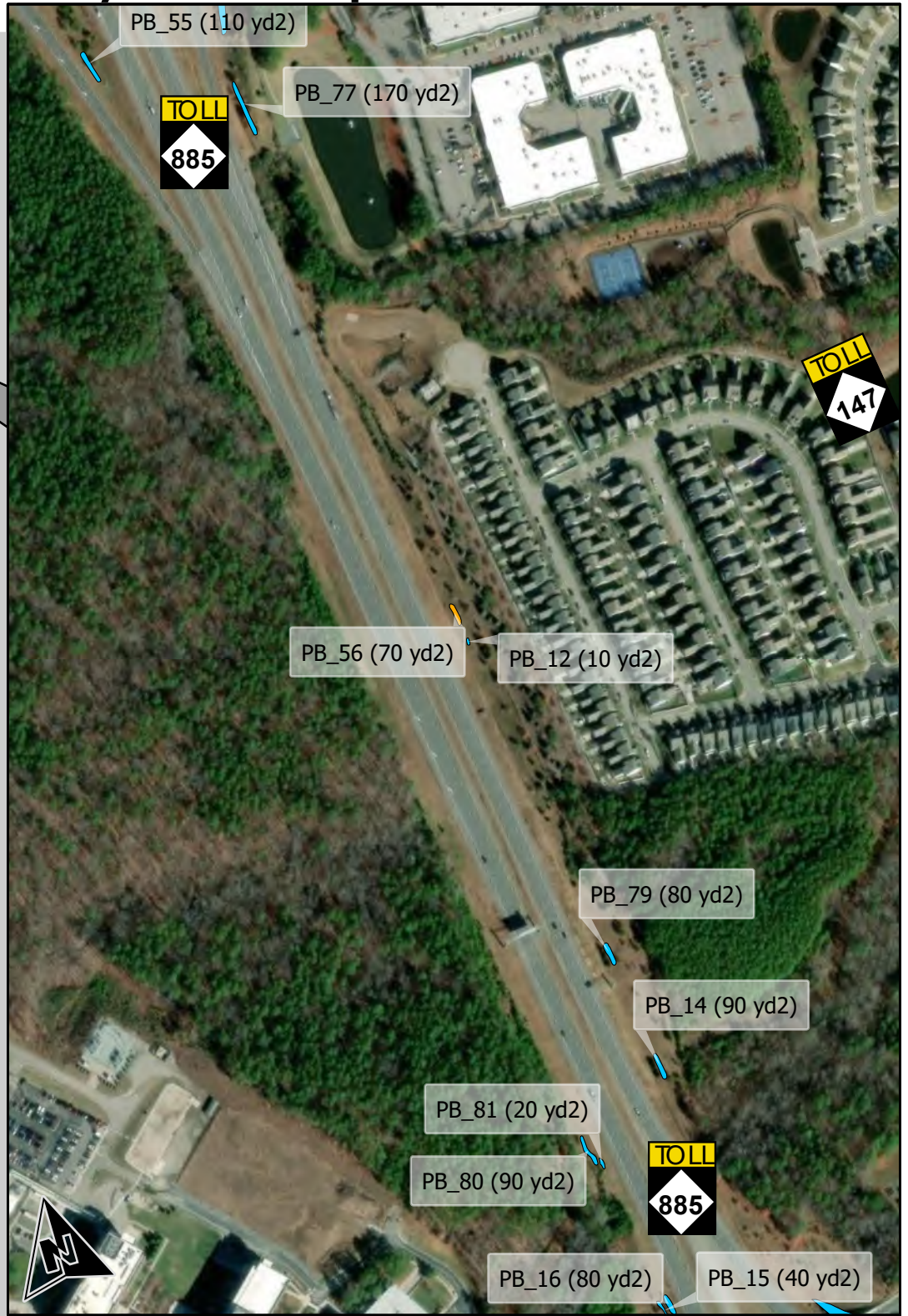
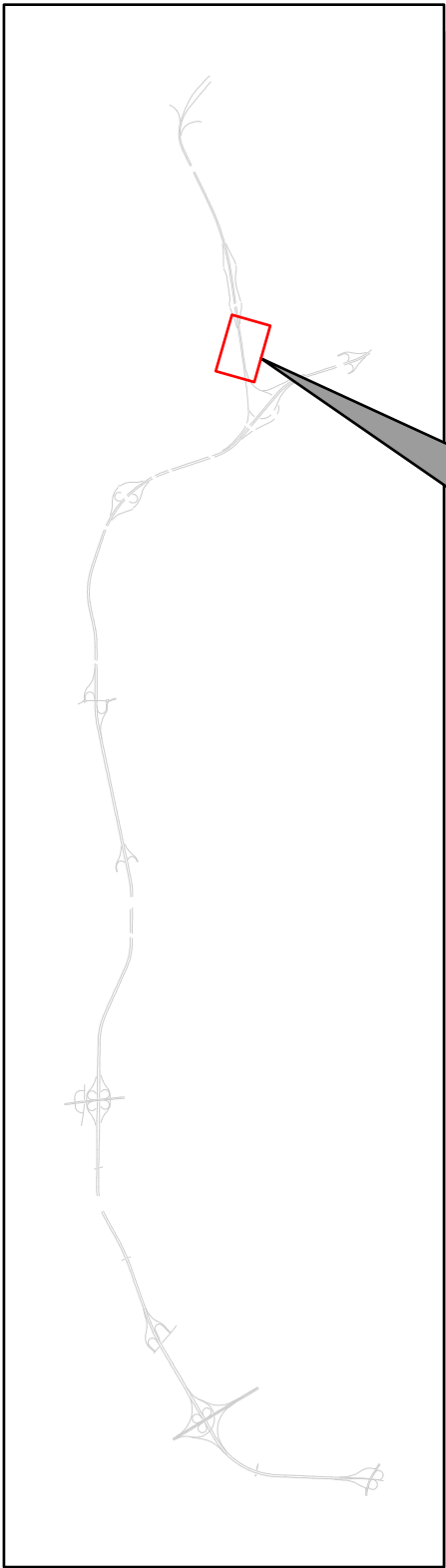
INV_ID	Area_SQYRD
PB_21	332
PB_22	1198
PB_23	1536
PB_40	525
PB_41	701
PB_42	672
PB_43	388
PB_44	145

INV_ID	Area_SQYRD
PB_45	162
PB_46	338
PB_47	782
PB_48	747
PB_49	107
PB_50	425
PB_51	320
PB_52	297



Page Area: 8,675 of 87,068 Square Yards

# Triangle Expressway Landscaped Areas: Plant Beds

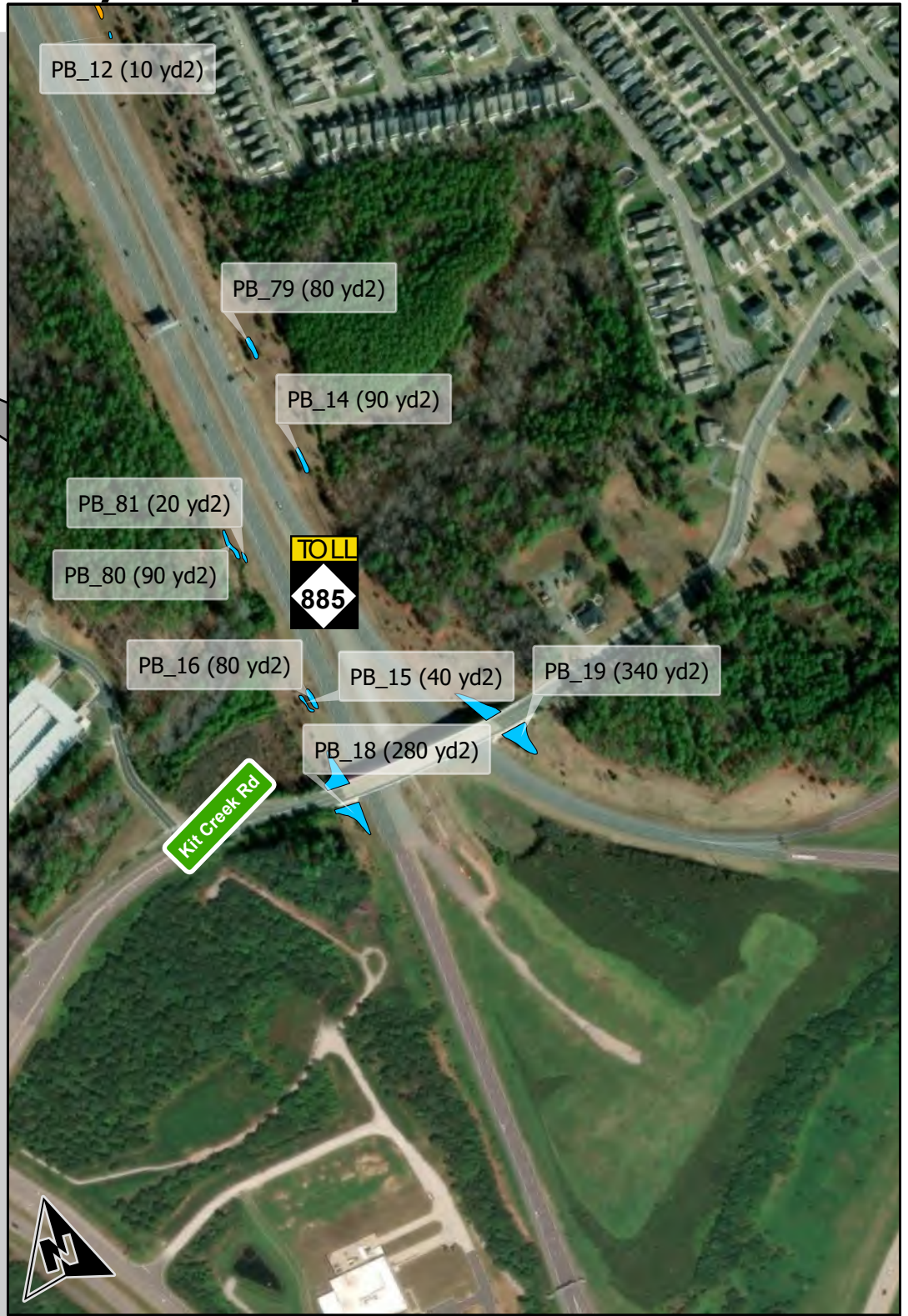
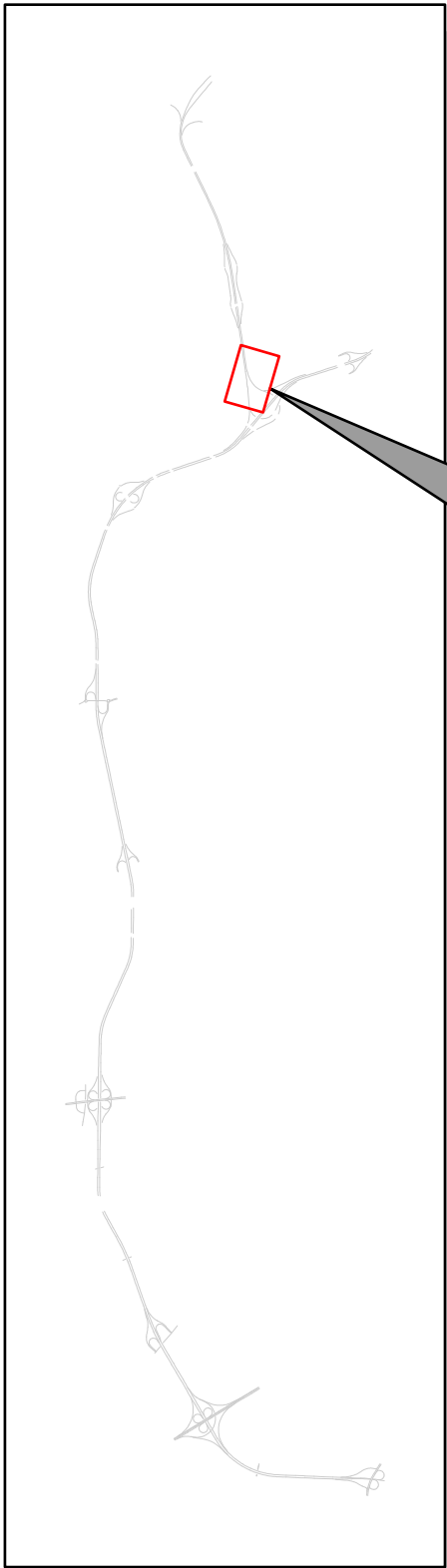


INV_ID	Area_SQYRD
PB_12	13
PB_14	87
PB_15	40
PB_16	77
PB_20	293
PB_55	106

INV_ID	Area_SQYRD
PB_56	72
PB_76	308
PB_77	169
PB_79	84
PB_80	90
PB_81	23



# Triangle Expressway Landscaped Areas: Plant Beds



INV_ID	Area_SQYRD
PB_12	13
PB_14	87
PB_15	40
PB_16	77
PB_17	298
PB_18	279

INV_ID	Area_SQYRD
PB_19	338
PB_20	293
PB_56	72
PB_79	84
PB_80	90
PB_81	23



Inventory ID	Area (SQ_YDS)	Page Number
PB_1	51	14
PB_2	74	14
PB_3	54	14
PB_4	33	14
PB_5	42	14
PB_6	35	14
PB_7	241	16
PB_8	105	16
PB_9	89	16
PB_10	80	16
PB_11	86	16
PB_12	13	27
PB_14	87	28
PB_15	40	28
PB_16	77	28
PB_17	298	28
PB_18	279	28
PB_19	338	28
PB_20	293	28
PB_21	332	26
PB_22	1198	26
PB_23	1536	26
PB_24	495	16
PB_25	467	16
PB_26	475	16
PB_27	746	16
PB_28	99	17
PB_29	82	17
PB_30	167	17
PB_31	1062	17
PB_32	39	17
PB_33	275	17
PB_34	517	25
PB_35	324	25
PB_36	682	25
PB_37	305	25
PB_38	622	25
PB_39	575	25
PB_40	525	25
PB_41	701	25
PB_42	672	25
PB_43	388	25
PB_44	145	25
PB_45	162	25
PB_46	338	25

Inventory ID	Area (SQ_YDS)	Page Number
PB_47	782	26
PB_48	747	26
PB_49	107	26
PB_50	425	26
PB_51	320	26
PB_52	297	26
PB_53	241	26
PB_54	367	26
PB_55	106	27
PB_56	72	27
PB_57	155	12
PB_59	177	12
PB_60	1079	12
PB_67	214	12
PB_68	260	26
PB_69	96	26
PB_70	91	26
PB_71	155	26
PB_72	77	26
PB_73	187	26
PB_74	560	26
PB_75	83	25
PB_76	308	25
PB_77	169	27
PB_79	84	28
PB_80	90	28
PB_81	23	28
PB_82	114	13
PB_83	367	13
PB_84	495	13
PB_85	389	13
PB_86	251	13
PB_87	389	13
PB_88	283	13
PB_91	191	12
PB_92	114	12
PB_93	125	12
PB_94	234	12
PB_95	142	12
PB_96	217	12
PB_97	186	12
PB_98	104	12
PB_99	134	12
PB_100	92	12
PB_101	127	11

Inventory ID	Area (SQ_YDS)	Page Number
PB_102	54	11
PB_103	120	11
PB_104	86	11
PB_105	74	11
PB_106	246	11
PB_107	171	11
PB_108	209	11
PB_110	196	11
PB_111	72	11
PB_112	85	11
PB_114	124	11
PB_115	86	11
PB_116	130	11
PB_117	61	11
PB_118	90	10
PB_119	91	10
PB_120	72	10
PB_121	74	10
PB_122	105	10
PB_123	94	10
PB_124	157	10
PB_125	202	10
PB_126	189	10
PB_127	195	10
PB_128	73	10
PB_129	68	10
PB_130	96	10
PB_131	99	10
PB_132	62	10
PB_133	72	10
PB_134	94	10
PB_135	108	10
PB_136	97	10
PB_137	126	10
PB_138	57	10
PB_139	70	10
PB_140	33	10
PB_143	901	9
PB_154	425	9
PB_153	494	9
PB_155	646	9
PB_156	12	9
PB_157	39	9
PB_158	470	9
PB_166	132	7

Inventory ID	Area (SQ_YDS)	Page Number
PB_167	115	7
PB_168	105	7
PB_170	143	7
PB_171	165	7
PB_172	175	7
PB_173	166	7
PB_174	184	6
PB_175	84	6
PB_177	151	7
PB_178	115	7
PB_179	110	7
PB_180	58	5
PB_181	84	5
PB_183	65	5
PB_184	253	5
PB_185	246	5
PB_186	45	5
PB_187	87	5
PB_188	69	5
PB_189	55	5
PB_190	98	4
PB_191	71	5
PB_192	71	4
PB_193	72	4
PB_194	90	4
PB_195	127	4
PB_196	75	4
PB_197	96	4
PB_198	218	4
PB_199	245	4
PB_200	91	4
PB_201	107	4
PB_203	157	4
PB_204	156	4
PB_205	200	4
PB_206	170	4
PB_207	231	3
PB_208	227	3
PB_209	645	3
PB_211	559	2
PB_212	458	2
PB_213	709	2
PB_214	708	2
PB_215	119	2
PB_218	367	2

Inventory ID	Area (SQ_YDS)	Page Number
PB_219	576	2
PB_220	540	1
PB_221	1155	1
PB_222	535	1
PB_223	393	1
PB_224	1088	1
PB_225	535	1
PB_226	52	1
PB_227	1339	1
PB_228	2023	1
PB_230	531	2
PB_231	175	2
PB_232	529	2
PB_233	269	13
PB_234	395	13
PB_235	58	14
PB_236	82	14
PB_237	49	14
PB_238	74	14
PB_239	59	14
PB_240	60	14
PB_241	185	14
PB_242	107	14
PB_243	94	17
PB_244	77	17
PB_245	148	18
PB_246	189	18
PB_247	200	18
PB_248	184	18
PB_249	258	18
PB_250	136	18
PB_251	87	18
PB_252	179	18
PB_253	60	18
PB_254	17	18
PB_255	310	20
PB_256	143	20
PB_257	181	20
PB_258	554	22
PB_259	405	22
PB_260	359	22
PB_261	234	23
PB_262	307	23
PB_263	377	23
PB_264	328	23

Inventory ID	Area (SQ_YDS)	Page Number
PB_265	912	22
PB_266	127	18
PB_267	105	18
PB_268	87	18
PB_269	75	18
PB_270	64	18
PB_271	249	19
PB_272	179	19
PB_273	688	19
PB_274	732	17
PB_275	285	17
PB_276	158	17
PB_277	71	17
PB_278	183	17
PB_279	220	16
PB_280	164	14
PB_281	137	14
PB_282	218	13
PB_283	137	5
PB_284	186	5
PB_285	127	8
PB_286	147	8
PB_287	131	8
PB_288	163	8
PB_289	1374	12
PB_290	183	13
PB_291	183	13
PB_292	92	17
PB_294	99	24
PB_295	92	24
PB_296	81	24
PB_297	136	24
PB_298	92	4
PB_299	129	13
PB_300	167	13
PB_301	137	13
PB_302	205	13
PB_303	101	17
PB_304	470	23
PB_305	136	26
PB_306	408	3
PB_307	209	1
PB_308	127	13
PB_309	1973	21
PB_310	877	21

Inventory ID	Area (SQ_YDS)	Page Number
PB_311	1260	21
PB_312	802	21
PB_313	839	21
PB_314	1458	21
PB_315	578	7
PB_316	3511	7
PB_317	1964	7
PB_318	484	7
PB_319	2163	7
PB_320	1299	7
PB_321	170	7
PB_322	245	7
PB_323	1675	7
<b>Total</b>	<b>87068</b>	